



## ANNUAL REPORT

May 1, 2022 – April 30, 2023

### In Gratitude to a Dedicated Community

Thanks to you and other members of the Nelson-Atkins community, we had a fantastic fiscal year! In this edition of the Annual Report, we share an abundance of accomplishments made possible because of your involvement. Between May 1, 2022 and April 30, 2023, The Nelson-Atkins Museum of Art welcomed more than 500,000 visitors onsite—a triumphant return to our pre-pandemic activity! We welcomed you back into the galleries with incredible featured exhibitions, family festivals, and numerous programs, lectures, and events.

Through the efforts of our staff and community partners, the museum continues to become a more welcoming space for everyone. Last fiscal year, we increased the number of diverse visitors to the museum by 49 percent since 2019 and heard more than 29 unique languages spoken in our galleries! We continue working toward being a better reflection of the Kansas City community as outlined in our strategic plan (online at [nelson-atkins.org/about/2021-strategic-plan](https://nelson-atkins.org/about/2021-strategic-plan)).

Within these pages, you will find images from a host of exhibitions that we hope were as wonderful to view as they were to curate. We were thrilled to showcase three stunning cars in *American Art Deco: Designing for the People* and honored to house the retrospective *Alberto Giacometti: Toward the Ultimate Figure*. Continuing our KC Art Now series, we showcased art from local Asian American artists in *Found in Translation: Explorations by 8 Contemporary Artists*.

As our popular events and experiences returned, we remain most thankful for the energy and enthusiasm that you bring to the galleries and grounds of the museum every time you visit. We invite you to keep exploring and attend events such as Tivoli Under the Stars, Lunar New Year, and so much more. None of this is possible without you, our friends and supporters. We hope to see you in the galleries soon!

Sincerely,



**Evelyn Craft Belger**  
Chair, Board of Trustees



**Julián Zugazagoitia**  
Director & CEO

PHOTO (Cover): Sketch Club offerings were popular last year, held in a variety of locations on campus.

# TABLE OF Contents

02	Executive Letter
04	Education and Community Engagement
08	Art
16	Events and Transformational Gifts
17	Museum Financials
18	Membership Numbers
19	William Rockhill Nelson Society
20	Society of Fellows
26	Business Council
28	Year in Numbers



PHOTO: Native American Cultural Performances celebrated time-honored art, dance, and music traditions.

# EDUCATION AND COMMUNITY



## Community Partnerships Powered Our Mission

With the gracious support of our partners, the Nelson-Atkins continues to bring art education to various communities. We proudly thank these key organizations who, among many others, partnered with us in fiscal year 2023:

Ability KC

The Autism Society of  
the Heartland

Catholic Charities

Children's Mercy Hospital

Don Bosco Senior Center

The Farmer's House

Hillcrest Community Center

Imagine That!

Jewish Vocational Services

The Landon Center on Aging

LINC

The Whole Person

## Access Programs Bring Art to Everyone

Everyone deserves to engage with art regardless of their abilities. Nelson-Atkins access programs tailor free museum experiences for guests who require special accommodations.

### Minds in Motion

In partnership with KU Alzheimer's Disease Research Center and the Alzheimer's Association, the museum provided 11 tours for those with memory loss and their care partners.

*"It was fascinating to hear the reactions of the participants. Something about this artist was very engaging, as well as the skill of Sue and Alan (docents) in giving participants a safe space to share their thoughts."* — Program Attendee

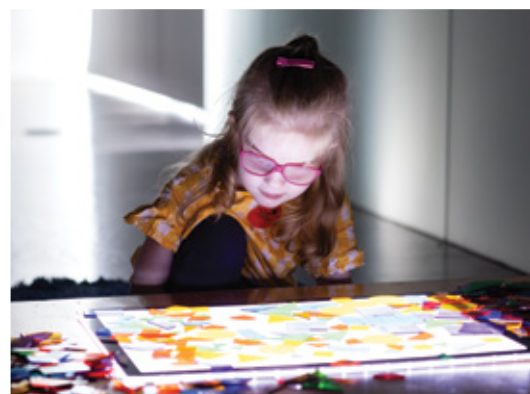
### Low Sensory Mornings

The museum welcomed 476 children with sensory sensitivities or autism spectrum disorder and their caregivers into the museum an hour before opening, where they could enjoy low-stimulation environments and hands-on activities on a monthly basis. Through our experiences with these community members, we hope to help other museums begin their own Low Sensory Morning programs.

## Volunteers Served and Supported

From volunteer educators to shuttlecart drivers and visitor services, our 370 volunteers help us realize our vision of inclusivity and education. Our 122 volunteer docents bring decades of knowledge and valuable insight into the collection, supporting a range of tours and events for all ages.

PHOTOS (Left): Kansas City's Lawn Party in partnership with Kansas City Parks & Recreation. (Right, top to bottom): guests attended *Signs: Photographs by Jim Dow*; European galleries hosted a Minds in Motion tour; hands on activities were offered at Low Sensory Mornings; students on a group tour; a family enjoyed the Bloch Galleries.



## Youth Programs Gave Rise to a New Generation

Early access to art and art education is transformational. Nelson-Atkins youth programs taught children and teens how to meaningfully interact with art through unique opportunities.

### School Tours and Workshops

This year, we welcomed 3,622 students from 68 schools from far-ranging districts, elementary through high school, to enrich their cultural understanding and extend their classroom into the museum.

### Teen Council and Teen Guides

Nelson-Atkins teen programs aren't just designed for teens—they're also led by them. Last year's Teen Council was composed of 14 students from across the Kansas City metro—including public, private, and home schools. In fiscal year 2023, the Teen Council launched the popular Teen Fashion Show.

## Festivals Celebrated Our Global Cultures

Nearly 32,000 guests joined us for our annual cultural festivals, which sought to reflect and honor Kansas City's diverse communities, cultures, and traditions:

June: Juneteenth Celebration

July: Kansas City's Lawn Party

September: Deaf Cultural Festival

November: Día de los Muertos Festival/Altar

January: Lunar New Year Festival

March: Native American Cultural Performances

April: Passport to India Cultural Performances

PHOTOS (Left to right, top to bottom): Young art enthusiasts at the annual Family Field Trip night; Juneteenth art activity in the Spencer Art Reference Library; Native American Cultural Performance in Kirkwood Hall; Deaf Cultural Festival activity book; Passport to India Cultural Performance in Atkins Auditorium; Día de los Muertos altar in Kirkwood Hall drew thousands of remembrances last year; first annual Teen Council Fashion Show; Passport to India music and dance delighted audiences; powerful Juneteenth dance performance.





# ART



“Every day, just by visiting the galleries, Museum visitors travel across the globe and across time right in the heart of Kansas City. Our featured exhibitions extend that reach and this year was no exception.” — William Keyse Rudolph, Phd



Every day, just by visiting the galleries, museum visitors travel across the globe and across time right in the heart of Kansas City. Our featured exhibitions extend that reach, and this year was no exception. Our pandemic-delayed *American Art Deco: Designing for the People, 1918 – 1939*, (July 9, 2022 – January 8, 2023) explored how this dynamic international style of design made its way from Paris into almost every facet of American art and culture between the two world wars. A highlight was the appearance of three Art Deco-inflected cars in the gallery—a first for the museum and entirely due to the generosity of C. Richard Belger, Evelyn Craft Belger and Marshall Miller.

Racing from iconic design to iconic European modernism, we were excited to present *Alberto Giacometti: Toward the Ultimate Figure* (March 18 – June 18, 2023), the first Heartland retrospective of the work of Alberto Giacometti (1901 – 1966), one of the most influential sculptors of the 20th Century. Committed to the human figure as a means of expression, Giacometti's works reminds us that art is both universal and deeply personal.

Our series *KC Art Now* continued with *Found in Translation: Explorations by Eight Contemporary Artists* (October 8, 2022 – August 20, 2023). Works by eight local artists, all immigrants to the United States, explored the vibrancy of the Asian and Pacific Islander experience through a dazzling array of media.

Finally, an historic loan of Artemisia Gentileschi's 1620s masterpiece, *Judith and her Maidservant with the Head of Holofernes*, from the Detroit Institute of Arts became the nucleus for a dynamic focus show, *Fierce Women: Artemisia Gentileschi and the Women Worthies*, (February 25 – July 23, 2023), exploring the idea of heroic women in religion and culture as expressed in Western art.

From American industrial design to the best in local art to world-class European Baroque and Modern art, all these projects were the hard work of our talented curators and could not happen without the support of our generous donors and members, who make it all possible. A hearty thank you to all!



**William Keyse Rudolph, PhD**  
*Deputy Director, Curatorial Affairs*

PHOTO (Left): Fashionable period automobiles were on full display in the Bloch Building for the exhibition, *American Art Deco: Designing for the People, 1918-1939*.



## KC Art Now Championed Local Voices

Whether up-and-coming or firmly established, Kansas City is replete with talented artists. The KC Art Now initiative amplifies these local voices and showcases art that tells larger stories about culture, identity, and origins.

### *Found in Translation: Explorations by 8 Contemporary Artists*

The second exhibition in the KC Art Now series, *Found in Translation* featured eight artists who immigrated to the Kansas City region from places across Asia. Although each piece represented its artist's unique lived experience—through media as varied as self-portraits, glazed porcelain, and photo collage—common themes of transformation and evolution reverberated throughout the exhibition.



## A Winning Year for Art

### *Sailing to a Super Bowl Victory*

After losing a friendly wager during the Super Bowl, the Philadelphia Museum of Art temporarily loaned Thomas Eakins' painting *Sailing* to the Nelson-Atkins. In a surprise gesture, Sasha Suda, the George D. Widener Director and CEO of the Philadelphia Museum of Art, also brought along a preliminary oil sketch of *Monsignor James P. Turner*. The finished painting, already in the Nelson-Atkins collection, was displayed alongside the sketch and *Sailing* in the American Gallery through June. Altogether, these three examples of Eakins' work provided an enlightening glimpse of his creative processes to guests of the Nelson-Atkins.



PHOTOS (Left, and right, top, middle): *Found in Translation: Explorations by 8 Contemporary Artists* was the second installation in the KC Art Now series, celebrating local, contemporary artists. (Right, bottom): Julián Zugazagoitia of the Nelson-Atkins huddles with Sasha Suda of the Philadelphia Museum of Art and Kansas City Chiefs Cheerleaders around this year's Super Bowl wager, *Sailing*.



PHOTO (Left): A new sculpture was unveiled in the Donald J. Hall Sculpture Park. Purchase: acquired through the generosity of the William T. Kemper Foundation—Commerce Bank, Trustee. Jan Hendrix, Dutch (born 1949). *Mirror Pavilion III*, 2020. Stainless steel; 126 x 127 1/2 inches (320 x 323.9 cm). 2021.15. Photo: Gabe Hopkins.

(Right, top to bottom): Gallery installation photographs of Artemesia Gentileschi's masterpiece in *Fierce Women*; *American Art Deco* entry space and galleries featured many forms of media; *Alberto Giacometti* included the artist's unmistakable figures in bronze form.

## Exhilarating Exhibition Experiences

### ***Fierce Women: Artemisia Gentileschi and the Women Worthies***

This special focus exhibition showcased tales of extraordinary women in myth and history as seen through the lens of one of the Baroque era's most gifted artists, Artemisia Gentileschi. Built around an extraordinary loan of Gentileschi's monumental canvas *Judith and her Maidservant with the Head of Holofernes*, ca. 1623–1625, from the Detroit Institute of Arts, this exhibition was accompanied by rarely seen Old Master prints and drawings from the Nelson-Atkins collection.

*Fierce Women*: February 25 – July 23, 2023 | Focus exhibition organized by the Nelson-Atkins Museum of Art with support from the Samuel H. Kress Foundation.

### ***American Art Deco: Designing for the People***

A multidisciplinary exhibition of works created during the period between the two world wars, 1918–1939, explored the socio-economic impact of advancements during the Second Industrial Age, the Depression, Jim Crow laws, and the Dust Bowl. The multi-sensory experience engaged guests interested in history, art, design, architecture, fashion, cinema, music, and automobiles through vignettes capturing the country's many cultural shifts during this transformative time.

*Art Deco*: July 9, 2022 – January 8, 2023 | Organized by The Nelson-Atkins Museum of Art and Joslyn Art Museum, Omaha, Nebraska. In Kansas City, generous support provided by Linda Woodsmall DeBruce and Paul DeBruce; Shirley Bush Helzberg; Dick Belger and Evelyn Craft Belger; Nancy and Rick Green; Marion and Henry Bloch Family Foundation; Richard J. Stern Foundation for the Arts – Commerce Bank, Trustee; Atterbury Family Foundation; The Barton P. and Mary D. Cohen Charitable Trust; Hallmark Cards, Inc.; JE Dunn Construction; National Endowment for the Arts; TIVOL; and the Campbell/Calvin Fund for Exhibition Support.

### ***Alberto Giacometti: Toward the Ultimate Figure***

The region's first major retrospective of the groundbreaking modernist sculptor featured important works in bronze and in oil, as well as plaster sculptures and drawings, many of which have never been seen in this country. This exhibition was drawn from the collection of the Fondation Giacometti in Paris.

*Giacometti*: March 18 – June 18, 2023 | Co-organized by the Fondation Giacometti and The Nelson-Atkins Museum of Art. In Kansas City, generous support provided by Hall Family Foundation; Paul DeBruce and Linda Woodsmall-DeBruce; Neil Karbank and Gretchen Calhoun; Muriel McBrien Kauffman Family Foundation; Dr. Douglas L. and Dana H. Nelson; Donald J. Hall Jr.; Evelyn Craft Belger and Richard Belger; Marion and Henry Bloch Family Foundation; Nancy and Rick Green; R Lyman and Sally J. Ott; Richard J. Stern Foundation for the Arts–Commerce Bank, Trustee; JE Dunn Construction; and the Campbell/Calvin Fund for Exhibition Support.



## Acquisitions and Gifts of Art Brought Fresh Perspectives

More than simply additions to our collections, this year's 274 acquisitions and gifts of art continue to expand our mission of representing humanity through visual art.

PHOTOS (Left and right, top row):

William Rockhill Nelson Trust through the generosity of Evelyn Craft Belger, Neil Karbank, Steve Karbank, and the George H. and Elizabeth O. Davis Fund. Gabriel de la Mora, Mexican (born 1968).

Five works from the *Lepidoptera* Series: *826 I - Gr.An.*, 2022; *826 I - Pa.Bl.*, 2022; *1,810 I He.Am.*, 2022; *2,264 - He.Le. (1,271 He.Le. + 993 He.Le.)*, 2022. Butterfly wings mosaic on museum cardboard, 13 3/4 × 31 1/2 × 2 3/8 inches (35 × 80 × 6 cm) each. 2022.34.1-4. Photos: Dana Anderson.

(Left and right, middle row):

Gift of Peggy and William Lyons.

Joel Sternfeld, American (born 1944). *McLean, Virginia*, December 4, 1978; printed 2005. Dye transfer print. Image: 14 3/4 × 19 1/8 inches (37.47 × 48.58 cm); sheet: 16 1/2 × 21 1/8 inches (41.91 × 53.66 cm). 2022.25.7. Photo: Dana Anderson.

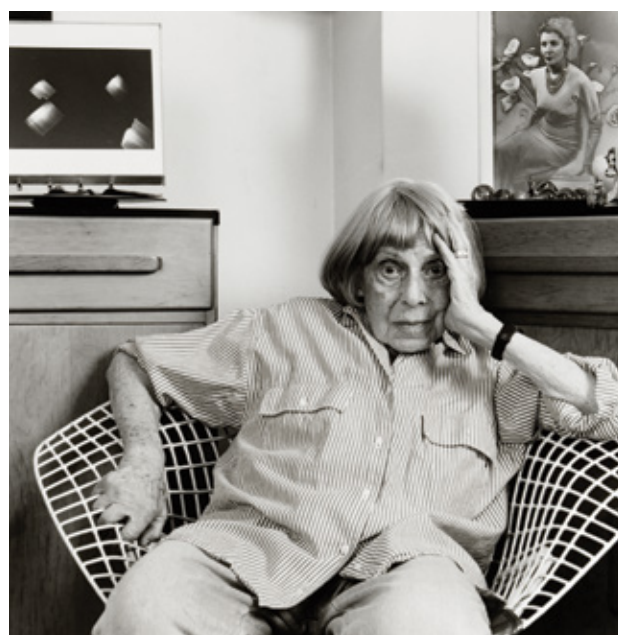
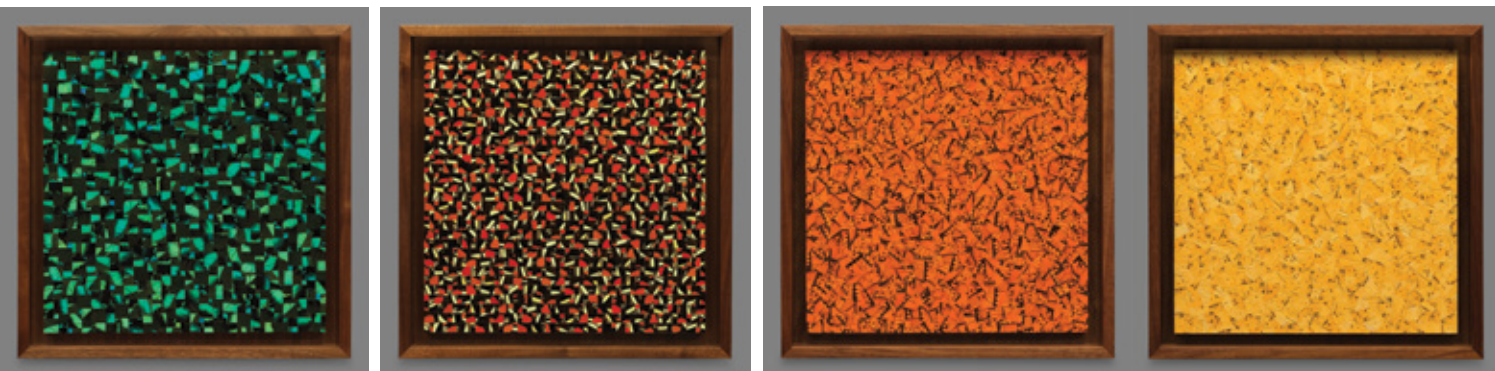
Gift of Reneé Pryor Newton and Craig Pryor in loving memory of their parents Leonard and Maxine Pryor.

Leonard Pryor, American (1924–2015). *North End*, 1950. Oil on canvas; 46 1/4 × 34 1/4 inches (117.48 × 87 cm). 2022.8.1.

Gift of Michael S. Sachs.

Nancy Lee Katz (American, 1947–2018). *Ilse Bing*, 1993. Gelatin silver print, image: 10 1/16 × 9 13/16 in. (25.5 cm × 25 cm); sheet: 14 × 10 7/8 in. (35.5 × 27.7 cm). © Estate of Nancy Lee Katz. 2022.32.7. Photo: Dana Anderson.





PHOTOS (Left and right, bottom row):  
 Promised gift of Bill and Christy Gautreaux Collection.  
 Khalif Tahir Thompson, American (b. 1995). *Summertime*,  
 2022. Oil on canvas, handmade paper, papyrus, velvet, raw  
 silk, fabric, newsprint, acrylic and mixed media, 89 × 155 1/8  
 × 2 in. (226.06 × 394 × 5.08 cm). 3.2023.1,2. Photo: Gabe  
 Hopkins and Dana Anderson.

Purchase: William Rockhill Nelson Trust through the  
 George H. and Elizabeth O. Davis Fund, in honor of Rick  
 Green and his leadership of the Board of Trustees.  
 Designed by Jean-Christophe Fischer, French (1779–1854).  
*Mechanical Desk (Table à la Tronchin)*, ca. 1834. Rosewood,  
 oak, gilt bronze, leather; 37 × 54 × 28-3/4 in. (93.98 × 137.16  
 × 72.99 cm). 2022.11. Photo: Gabe Hopkins.



## Events and Transformational Gifts

### Through Gifts and Events We Reached New Heights

#### Lilly Endowment, Inc.

Thanks to a generous grant from Lilly Endowment, Inc., the Nelson-Atkins has developed the World Religions Initiative, which will explore religious faiths through the context of objects in our permanent galleries. The five-year grant will support updates to gallery interpretation as well as three exhibitions, beginning with Sonam Dolma Brauen's fall 2023 installation *My Father's Death*.

#### C100 Annual Luncheon

Celebrating its 10th year in 2022, the Committee of 100 hosted keynote speaker Bronson van Wyck and luncheon at the museum with great success.

#### 2022 Annual Gala

Inspired by the exhibition *American Art Deco: Designing for the People, 1918–1939*, the annual gala featured era-specific elegance and unforgettable décor.

#### ShuttleCork 2023

This year, the museum's largest event raised a record-breaking \$2 million in revenue and engaged a larger audience than ever with the introduction of ShuttleCork After Dark.

#### Party Arty 2022: Vitality & Vice

Young Friends of Art's signature fundraiser is a great way to have a fun time while supporting the arts. Last year, nearly \$150,000 was raised in support of the museum's mission.

PHOTOS (Left to right, top to bottom): Party Arty artist experience; new ShuttleCork After Dark debut; Art Deco sophistication in Kirkwood Hall at last year's Annual Gala; Gift of Sonam Dolma and Martin Brauen in honor of Leesa Fanning: a temporary installation by Sonam Dolma Brauen, Swiss (Born in Tibet, 1953). *My Father's Death*, 2010. Cloth and plaster, 49 cast-off monk's robes, 2 vests, and 9 molded plaster tsa tsa, dimensions variable. 2020.19.1-60. Image: Martin Brauen, Bern, Switzerland; a sold-out crowd for the 2022 C100 Luncheon.



# FINANCIALS

For the fiscal year ending April 30, 2023, the museum built an operational budget of nearly \$33 million, expecting that 50 percent of the revenue would come from endowment support and the remaining 50 percent from contributions and earned revenue.

Actual, balanced, operational results showed a revenue make-up of 43 percent contributions, 17 percent earned income, and endowment support of 40 percent. These beneficial shifts in revenue were a direct result of generous support from donors, members, and guests who enjoyed lunches in Rozzelle Court and purchases in the Museum Store.

Operational efficiencies built over the previous two years, combined with a staff dedicated to delivering cost effective programming, resulted in total expenditures for the year of \$31 million—a savings of \$2 million dollars from budget.

Diligent volunteers and generous supporters of the museum provide oversight of the investment performance, operational progress, audit results, and tax returns of the museum throughout the year. We thank each of them and all of you for the bright future you are providing for the museum and the communities we serve.

All the Best,



**Tammy J. Bluhm**  
Vice President, Finance & Chief Financial Officer

## 2022–2023

### BOARD OF TRUSTEES

Evelyn Craft Belger, Chair

Sandra Lawrence, Treasurer

Ramón Murguía, Secretary

Alejandro Sánchez Alvarado

Mary Atterbury

Ann Baum

Pete Browne

Grant Burcham

Ramin Cherifat

Valerie Chow

Paul DeBruce

Bill Gautreaux

Rick Green

Lewis Gregory

Don Hall, Jr.

Shirley Bush Helzberg

Neil Karbank

Steve McDowell

Sara Morgan

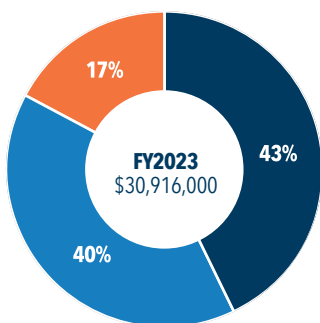
Leo Morton

Mark O'Connell

Marny Sherman

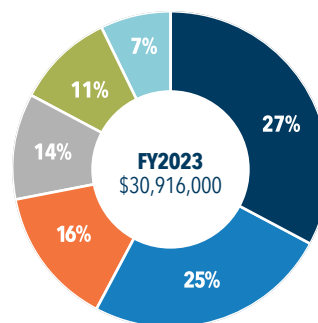
Kent Sunderland

William Taylor



### OPERATING REVENUE

**43%** Contributed Income  
**40%** Endowment Income  
**17%** Earned Income



### OPERATING EXPENSES

**27%** Design & Experience / Operations  
**25%** Guest Services / IT  
**16%** Curatorial  
**14%** Executive / Finance / HR / Marketing  
**11%** Learning & Engagement  
**7%** Development

# Membership By the Numbers



## Friends and Young Friends of Art



**\$1,527,616**  
MEMBERSHIP REVENUE

**14,162**  
HOUSEHOLDS

## Society of Fellows



**\$2.1M+**  
MEMBERSHIP REVENUE

**786**  
MEMBERS

## Business Council



**\$636,740**  
MEMBERSHIP REVENUE

**92**  
MEMBERS

# William Rockhill Nelson Society

Established in 2010 to celebrate the generosity of planned gift donors.

---

Kathie Allison	Dr. Jim M. Flynn and Mrs. Francie Flynn	Mr. and Mrs. Alan R. Marsh
Mr. and Mrs. Brent Anderson		Mr. Joseph and Mrs. Jennifer Marsh
Mrs. Barbara Ashby	Dr. Ann Friedman	Mrs. Lorraine Martin
Frances Atkeson	Mr. Larry and Mrs. Maureen Gamble	Mrs. Margot H. Matteson
Mr. and Mrs. Alan Atterbury	Mr. and Mrs. J. Peter Gattermeir	Mrs. Marilyn McConnell
Mr. George A. Barton	Ms. Sheryl Geisler	Mr. Mark McDowell
Mr. Christopher Beal and Mr. Timothy Van Zandt	Mr. Edward Goldstein and Ms. Rachel Krantz	Mr. and Mrs. C. Patrick McLarney
Ms. Kristin Beery	Drs. Lillian Gonzalez-Pardo and Manuel Pardo	Dr. and Mrs. Richard J. McNally
Delores De Wilde Bina and Robert F. Bina	Mrs. Jean Green	Mrs. Virginia Merrill
Robert and Barbara Bloch	Mrs. Laura Greenbaum	Mrs. Jayne Milburn
Ms. Sandra Bowlby	Mr. Donald J. Hall	Dr. Linda Mitchell
Joyce Burner	Mrs. Shirley and Mr. Barnett C. Helzberg Jr.	Mrs. Barbara Nicely
Mr. Charles Bush and Mr. Calvin Lau	Mr. Robert A. Hiller	Ms. Pamela Sue Orton
N. Byron	Mr. and Mrs. Irvine O. Hockaday Jr.	Dr. and Mrs. R. Lyman Ott
Dori E. Canady	Mrs. Carol Hudson	Mrs. Lee Pentecost
Mr. and Mrs. Charles S. Cassias	Mr. Harold Hudson Jr	Ms. Penny B. Plotsky
Ms. Karen L. Christiansen and Mr. Thomas B. Phillips	Mr. and Mrs. Lawrence D. Hunter-Blank	Drs. Charles and Susan Porter
Mr. James Churchill and Mrs. Ruth Leiter	Dr. Christina Ivers and Mr. Ron Scroggham	Mr. and Mrs. Richard S. Press
Mr. Barton Cohen	Dr. Larry and Gretchen Jacobson	Mr. Bob Regnier
Mrs. Joan S. Cooke	Mr. Russell Jones Sr	Mr. and Mrs. James R. Sarkis
Mrs. Una K. Creditor	Ms. Sandra Kelly	Don Shanks
Michael Dachenhausen	Ms. Marcia Kenley	Mr. and Mrs. Frederick M. Solberg Jr.
Frank and Elizabeth Daniels	Mr. and Mrs. William P. Kline	Mr. and Mrs. Josh Tanzer
Mr. John Thomas and Mrs. Sue Dauner	Mr. and Mrs. Herbert M. Kohn	Ms. Mary Thorp
Ms. Ann Dickinson	Ms. Molly J. Levitt	Mr. and Mrs. James C. Tomlinson
Mrs. Barbara Eagleton	Jeanne Levy	Mrs. Marylou Turner
Mr. Michael D. Fields	Mr. Bob Lunn	Mr. and Mrs. Paul Uhlmann III
Janet Fisher	Mr. and Mrs. Jack L. Mahurin	Mr. Bradley R. Voelker
	Mrs. Betty Jo Marder	Ms. Irene W. Ward
		Mr. Byron and Mrs. Sandy Whitaker
		Mrs. Fifi White
		Mr. Brian D. Williams

---

For more information, please contact **Matt Richards, Development Officer,**  
**Planned Giving, at [mrichards@nelson-atkins.org](mailto:mrichards@nelson-atkins.org), 816.751.1284.**

---

# 2022 – 2023 Society of Fellows

May 1, 2022 – April 30, 2023

## CHAIRMAN'S CIRCLE

---

Mrs. Ann Baum  
Mr. Richard Belger and Ms. Evelyn Craft Belger  
David Booth  
Mr. Paul DeBruce and Mrs. Linda T. Woodsmall-DeBruce

Mr. and Mrs. Richard C. Green  
Mrs. Shirley and Mr. Barnett C. Helzberg Jr.  
Mr. Neil D. and Mrs. Gretchen Karbank  
Sara and Bill Morgan

John and Marny Sherman  
Mr. Kent Sunderland

## DIRECTOR'S CIRCLE

---

Mr. and Mrs. Alan Atterbury  
George and Theresa Barton  
Mr. Taylor Bennett and Rebekah Sukolics  
Mr. and Mrs. A. Joseph Brandmeyer  
Mr. and Mrs. J. Grant Burcham  
Drs. Andrea and David Feinberg

Mr. J. Scott Francis and Ms. Susan Gordon  
Bill Frick  
Bill and Christy Gautreaux  
Mr. Donald J. Hall  
Don Hall Jr.  
Mr. and Mrs. William M. Lyons

Liz and Greg Maday  
Mr. T. Bradley Manson and Ms. Teresa Meagher  
Mr. and Mrs. Mark M. O'Connell  
Alejandro Sánchez Alvarado & Tatjana Piotrowski  
Dr. Judith Tharp

## CURATOR'S CIRCLE

---

Mr. Lynn E. Adkins and Mrs. Linda Lighton Adkins  
Ms. M. Lynn Badaracco and Mr. Dwight Quiring  
Mr. Pete Browne and Mrs. Julie Walker Browne  
Mr. and Mrs. Ramin Cherafat  
Dave and Dee Dillon  
Christopher and Beth Eperjesy  
Shirley Estes  
Mr. and Mrs. James E. Ferrell

Mr. Jean K. Francisco  
The Honorable Jon R. Gray and Dr. Valerie E. Chow  
Amy and Jeff Hargroves  
Mr. and Mrs. Irvine O. Hockaday Jr.  
Lorraine B. Martin  
Ms. Virginia (Gina) Miller  
Mr. and Mrs. Stephen G. Mos

Dr. and Mrs. Douglas L. Nelson  
Nina Stricker  
Mr. and Mrs. William B. Taylor  
Todd and Emily Voth  
Chasitie and Michael Walden  
Mrs. Sarah A. Ye

## BENEFACTOR

---

Anonymous (3)  
Mr. and Mrs. William Aliber  
Mr. and Mrs. Lee Baty  
Mr. Daniel and Ms. Christine Blegen  
Mr. and Mrs. Thomas M. Bloch  
Jack and Fran Brozman  
Richard P. and Jane M. Bruening  
Dr. Stephen and Mrs. Susan Bubb  
Dr. Dustin and Mrs. Ashley Burlison  
Mr. and Mrs. Candelario Carmona  
Mr. and Mrs. Thomas P. Cartmell  
Scott and Valerie Chaloud  
Mr. and Mrs. Richard H. Chamberlain  
Mr. and Mrs. Charles E. Clark  
Dr. and Mrs. Barry R. Cooper  
Ms. Katherine DeBruce  
Dave and Christina Doan  
Joseph and Diana Eisenach  
Robert N. Epsten  
Mr. Michael D. Fields  
Stephen M. Figge

The Gattermeir Family Foundation  
Mr. Peter Goulet  
Jean Green  
Mr. and Mrs. Lewis D. Gregory  
Michael R. and Marlys G. Havery  
John and Sharon Hoffman  
Mr. Jeffery and Dr. Aarti Judd  
Ms. Marcia Karbank  
Mr. and Mrs. Basil W. Kelsey  
Jonathan and Nancy Lee Kemper  
Ms. Lisa Krigsten  
Mr. and Mrs. David M. Lockton  
Dr. Loretta Loftus  
Mike and Linda Lyon  
Jennifer Maassen  
Mr. and Mrs. Tom A. McDonnell  
Ms. Molly McGee  
Mr. and Mrs. James L. Moffett  
Ms. Daphne Nan Muchnic  
Mr. and Mrs. Lewis E. Nerman  
Jeff and Tonya Poe

Mr. and Mrs. Randolph K. Rolf  
Ms. Mary F. Ventura and Mr. Randell L. Sedlacek  
Sara and Tracy Shelby  
Margaret H. Silva  
William and Sandra Snyder  
Mr. and Mrs. James E. Tinsman  
Mr. and Mrs. Clifford R. Trenton  
Robert and Louise Tritt  
Mr. James and Amy Uhlmann  
Mr. and Mrs. W. Don Wagner  
Mr. Michael Waterford  
Tom and Karenbeth Zacharias  
Mr. and Mrs. John F. Zander II

## COLLECTOR'S CIRCLE

---

Anonymous (3)  
Lindsay Abbott-Field and Wayne Field  
Dr. Adam and Mrs. Sarah Alli  
Mr. and Mrs. Jon Angrist  
Elizabeth and Ian Arnold  
Dr. Lillard and DeVette Ashley  
Mr. and Mrs. Perry D. Atha  
David and Lauren Atterbury  
Mr. Zachary Ball  
Mr. William C. Barr and Ms. Kim Z. Rock  
Mr. and Mrs. Jonathan E. Baum  
Mr. and Mrs. Bryan Beaver  
Mrs. Christine and Mr. Steve Black  
Robert and Barbara Bloch  
Mr. and Mrs. Daniel P. Bolen  
Dr. Mark Box  
Mr. and Mrs. Barrett Brady  
Ms. Ruth Brito  
Ms. Lisa Browar  
Mr. and Mrs. Robert G. Brown  
Mr. Quigley Bruning  
Gerard and Judy Bukowski  
Mr. and Mrs. John W. Callison  
Melissa and James Carnes  
Ms. Pati A. Chasnoff  
Ms. Karen Christiansen and Thomas B. Phillips  
Mr. and Mrs. J.N. Clevenger  
Ms. Lena Price and Mr. Thomas Cohen  
Mr. and Mrs. James Copaken  
Mr. and Mrs. Thomas H. Corbin  
Mr. and Mrs. Fred N. Coulson IV  
Erica and Lorin Crenshaw  
Mr. Robert Cross  
Mr. and Mrs. T. Teal Dakan  
Ms. Anne Darby  
Mr. and Mrs. Richard M. Davis  
Dr. Samantha DeArmon and Dr. Simerun Singh  
Mr. and Mrs. Timothy Duncan  
Mr. Kevin Dunn and Mr. Bob Legler  
Terry and Peggy Dunn  
Beth Heineman Eliason  
Mrs. Anne and Mr. Howard Elsberry  
Mr. and Mrs. David W. Embry  
Mr. George Enders and Ms. Sally Ling  
Mr. and Mrs. Bradford M. Epsten  
Mr. and Mrs. Allen Erskine  
Mr. and Mrs. Jack Fingersh  
Mr. Trever Frickey and Mr. Todd Brezinka

Mr. and Mrs. Frank S. Friedman  
Mr. and Mrs. Steven B. Glassman  
Mr. and Mrs. Matt Gogel  
Dr. Jeffery Goldstein and Kim Klein-Goldstein  
Laura Greenbaum  
Allen and Gail Gutovitz  
Mr. James O. Hall  
Nancy and Bob Hatch  
Robert and Beverly Hechler  
Dr. and Mrs. John H. Helzberg  
Dr. Jane E. Henney and Dr. Robert Graham  
Lisa Merrill Hickok  
Mr. and Mrs. John Hjalmarson  
David and Anne Hollond  
Dr. Kenneth and Kristin Huber  
Mr. and Mrs. Dennis Hudson  
Dr. and Mrs. Randall B. Hudson  
Ms. Ashley A. Hutcheson  
Mr. and Mrs. Eric Thor Jager  
Mr. and Mrs. Russell S. Jones Jr.  
Ms. Alyson Joyce and Mr. Kale Joyce  
Patricia and Paul Keane  
Kathy Keene  
Mrs. Julie Kemper Foyer and Mr. Michel Foyer  
Mr. Allan A. King and Ms. Nancy Bean  
Mr. and Mrs. John Kmetz  
Mr. and Mrs. Charles W. Koester Jr.  
Mrs. Catherine and Mr. Anthony Kuester  
Mrs. Lois A. Lacy  
Dr. and Mrs. Thomas P. Laughlin  
Suzie Aron and Joseph Levin  
Mr. Thomas Lin and Ms. Rachel Hayes  
Ms. Laura Weber Lutz  
John and Daisy MacDonald  
Mr. and Mrs. Alan R. Marsh  
Mrs. Katherine Martin  
Mrs. Susan and Mr. Kevin McGreevy  
Dr. Michael Meurer and Lee Michelle Meurer  
Mrs. Janet and Mr. Phillip Miller  
Mr. Marshall V. Miller and Ms. Kathleen Kilway  
Mr. and Mrs. John Mitchell Jr.  
Ms. Susan J. Morgenthaler  
Mr. and Mrs. Leo E. Morton  
Matt and Kathy Nordhus  
Robin and Tony Notarianni  
Mr. and Mrs. John J. O'Connor III  
Ms. Crystal O'Dea  
Deborah and Michael Orozco

Allen and Debra Parmet  
Mr. and Mrs. W. Keith Pence  
John and Diane Phillips  
Stacy and William Pratt  
Kelly and Joseph Privitera  
Marc H. Radasky  
Mr. and Mrs. Robert L. Rebori  
Mr. Rick and Mrs. Susan Rhyner  
Mr. and Mrs. Dennis R. Rilinger  
Mr. Gary and Mrs. Anita Porte Robb  
Lawrence and June Rouse  
Mrs. Sarah Rowland  
Ms. Gloria Rudd  
Ms. Mandi Rudd  
Ms. Lucy Rupf and Mr. Alan Feldmeier  
Ms. Rebecca M. Sandring and Mr. Dennis R. Boatright  
Mr. and Mrs. Scott Saylor  
Mr. and Mrs. John H. Shackleford  
Mr. George and Mrs. Lisa Shadid  
Mr. Zachary Shafran  
Jim and Connie Shay  
Dr. John Sheets II and Dr. Joy Steveson  
Mr. Myron Sildon and Doris Hamilton  
Clarence Simmons  
Mrs. Sandee and Greg Smith  
Mr. and Mrs. Charles A. Spaulding III  
Mr. William and Ms. Susan Stannard  
Mr. and Mrs. William D. Sullivan  
Mr. and Mrs. A. L. Summerlin  
Mr. and Mrs. Guy S. Swanson  
Sven and Julie Sykes  
Mr. and Mrs. Stephen K. Taylor  
Mr. Quentin and Mrs. Chelsea Templeton  
Mr. and Mrs. H. Wayne Thompson Jr.  
Mr. James and Mrs. Kristal Thompson  
Mr. and Mrs. Paul J. Thompson  
Dr. and Mrs. R.W. Thompson  
Mrs. Ann Trask  
Mr. and Mrs. Thomas J. Turner III  
Patricia Werthan Uhlmann  
Jeff Van Slyke & Lisa Tuckel  
Dr. Kelvin Walls  
Mr. Myron and Mrs. Nicole Wang  
Mr. and Mrs. Thomas S. Ward  
Richard and Jennifer Wilson  
Mr. Andy and Mrs. Toma Wolff  
Dr. and Mrs. Julián Zugazagoitia

## PATRON

---

Anonymous (11)  
Mrs. Kerry and Mr. Matthew Adam  
Ms. DeSaix Adams  
Mr. and Mrs. John C. Aisenbrey  
Dr. Tony Albracht and Dr. Michelle L. Pal  
Mr. Don and Mrs. Christine Alexander  
Ms. Lauren Allen  
Dr. and Mrs. Mark J. Allen  
Mark and Jennifer Allen  
Mr. Steven and Mrs. Jeri Allison  
Amy and Marshal Allshouse  
Mr. and Mrs. Keith L. Alm  
Mr. and Mrs. Patrick Amey  
Ms. Kelly Lynn Anders  
Janis Andersen  
Mr. and Mrs. Jeffery Anderson  
Mr. and Mrs. Dick M. Anderson  
Dr. Terry D. Anderson and Mr. Michael Henry  
Mr. Craig Armstrong Loquient Inc.  
Dorothy Arneson and Ronald Vuturo  
Mr. and Mrs. Richard P. Atlas  
Wayne and Lisa Auer  
Drs. Mark and Jennifer Austenfeld  
Mr. and Mrs. Donald A. Austin  
Mrs. Sydney Backstrom  
Emily and Jeffrey Baker  
Dr. Roopa Bansal  
Mr. and Mrs. John F. Barlow  
Mr. and Mrs. C. David Barrier  
Ms. Frances Bastza  
Dr. Ivan and Karla Batlle  
Dr. James R. Batterson and Mr. Todd J. Green  
Chuck and Joan Battey  
Mrs. Terry and Mr. Stuart Bauman  
Mr. Christopher Beal and Mr. Timothy Van Zandt  
Melinda Beal  
Richard Bean and Sandra Castillo-Jackson  
Joanie Bergman and Bart Bergman  
Bob and Libby Berkebile  
Bert Berkley  
Hon. and Mrs. Richard L. Berkley  
Mr. and Mrs. William S. Berkley  
Mr. Robert A. and Dr. Phyllis Bernstein  
Dr. Irene Bettinger  
Sharon Betzelberger  
Mr. Nathan Beyer and Janice Boughner  
Mrs. Lucie Black  
Ms. Naheed Bleecker  
Bill and Anne Blessing  
Mr. and Mrs. Richard M. Bliss  
Amy Bode, M.D., and Anthony Marfin, M.D.  
Mr. Harvey S. Bodker  
Mr. and Mrs. Richard T. Boeshaar  
Mr. Kelly and Mrs. Jaymie Bonavia  
Dr. and Mrs. A. Michael Borkon  
Ms. Tracey Bormann Cattarin and Mr. David Cattarin  
Heather and Jon Bortnick  
Dr. and Mrs. Scott S. Boswell  
Diane Botwin and Mike Vessels  
Jonathan Braatz  
Ms. Stephane Bradley Cooch and Mr. Chris Cooch  
Mr. and Mrs. David Rall Bradley  
Brian and Francie Bradley  
Mr. and Mrs. Timothy L. Brake  
Patrick and Harriet Brazil  
Mr. and Mrs. J. Ford Brent  
Dr. Mark J. Brodkey  
Mr. and Mrs. Patrick Brooks  
Mr. Thomas and Mrs. Mary Lou Brous  
Mr. Stephen and Ms. Carolyn Brown  
Mr. and Mrs. Peter W. Brown  
Mr. Phillip S. Brown  
Mr. Thomas and Mrs. Mary Brown  
Beverly Sue Brownlee  
Hadley Burcham  
Mr. and Mrs. J. Thomas Burcham  
Mr. and Mrs. Garry Calvin  
Mr. Clayton Camblin  
Mr. Stanley J. Bushman and Ms. Ann Canfield  
Dan Carpenter and Kaye Summers  
Mr. Kirk W. Carpenter  
Mr. and Mrs. Scott Carter  
Mr. Peter Cashen and Ms. Caroline Engelman  
Mr. and Mrs. Charles S. Cassias  
Conan Castle  
Mr. and Mrs. Bruce E. Cavitt  
Ms. Lorece Channele  
Richard and Donna Childs  
Ms. Nan Chisholm  
Mr. Terry G. Christenberry and Judge Ann Mesle  
Robert Claassen  
Matthew and Rachele Clair  
Dr. Carl and Mrs. Elizabeth Cleveland  
Ms. Jeanine Cobler  
Mr. and Mrs. Steven E. Cole  
Mr. Andrew Colom  
Mrs. Martha Comment  
Timothy Cook  
Mrs. Joan S. Cooke  
Emanuel Cooper Jr  
Mr. and Mrs. Jon Copaken  
Mr. Robert and Ms. Marcia Corbett  
Ms. Betty Ann Cortelyou  
Mrs. Carol and Mr. John Cowden  
Dr. Patricia Cox  
Mr. and Mrs. Kanon Cozad  
Mr. and Mrs. Jack Craft  
Mr. J.E. Crawford  
Mr. and Mrs. Jeffrey M. Crowe  
Mr. John and Mrs. Susan Crowe  
Mr. Malcolm and Mrs. Mary Crowther  
Ms. Ellen D'Amato  
Sally and Dave Dannov  
Mrs. Lois Davidson  
Mr. Dennis Davis and Ms. Evelyn Otsuka Davis  
Mr. John Davis  
Mr. Mark Dehner and Ms. Susannah Evans  
Mr. and Mrs. George Devins  
Mr. and Mrs. Paul Diamond  
Dr. David Donovan  
Dr. Mary Denise Dowd and Ms. Jill Burton  
Kathy and David Dowell  
Mr. and Mrs. Joseph Downs  
Mr. and Mrs. Mark Dudenhoeffer  
Mr. and Mrs. B. Joseph Duffy III  
Dr. Eileen Duggan  
Dr. and Mrs. Burton L. Dunbar  
Dr. and Mrs. Daniel S. Durrie  
Ms. Sheryl Eckinger  
Thomas and Jennie Egan  
Jen and Derek Elder  
Dr. Kelstan Ellis and Mr. Phillip Murphy  
Mr. and Mrs. John R. Elmore  
Mrs. Jennifer and Mr. Warren Erdman  
Mr. and Mrs. Robert E. Esrey  
Mrs. Doris Evans Williams  
William and Michelle Fasel  
Mr. Mike and Mrs. Melanie Fenske  
Barry Festoff and Shea Gordon-Festoff  
JoAnn Field  
Dr. Brent Finley  
Ms. Marjorie Finley  
Mr. Kenneth I. Fligg Jr.

---

Cody Fotovich  
 John and Jeanne Fox  
 Dr. and Mrs. Bradley L. Freilich  
 Ms. Kathleen Garland and Mr. Gerard Eisterhold  
 Carolyn Gasser  
 Kirk and Joan Gastinger  
 Mr. and Mrs. Douglas N. Ghertner  
 Dr. Robert Gibbons and Mrs. Karen Gibbons  
 Ms. Carolyn Gibbs and Mr. Rick Nelson  
 Ms. Patricia B. Glenn and Dr. Michael J. Pronko, M.D.  
 Archie Gobber and Laura McGrew  
 Dr. and Mrs. John R. Goheen  
 Mr. David A. Goldberg and Ms. Ann L. Darke  
 Mrs. Geraldine Goldberg  
 Mr. Edward J. Goldstein and Ms. Rachel Krantz  
 Drs. Lillian Gonzalez-Pardo and Manuel Pardo  
 Mrs. Donna and Mr. Robert Goodwin  
 Mrs. Erin and Mr. Stephen Gorny  
 Pam and Gary Gradinger  
 Col. (Ret) Norman and Mrs. Doreen Greczyn  
 Ms. Sally Groves and Mr. Robert Firnhaber  
 Ms. Abby-Lynn Hale  
 Mr. and Mrs. John J. Hale  
 Mr. Casey and Mrs. Paula Halsey  
 Reverend and Mrs. Adam Hamilton  
 Ms. Laurie J. Hamilton  
 Mrs. Laura and Mr. Charlie Hammond  
 Jerry Harrington  
 Dodie Headington  
 Mr. and Mrs. Barret S. Heddens III  
 Ms. Kara Heitz and Mr. David Sylvester  
 Mr. and Mrs. Mark V. Heitz  
 Carl Helmstetter and Mary Corneil  
 Mr. Charles M. Helzberg and Ms. Sandra Lynn Baer  
 Clarke and Mary Henry  
 Donna A. Henry  
 Dr. Joseph and Mrs. Patricia Henry  
 Mrs. Charles M. Herman  
 Mr. and Mrs. Michael E. Herman  
 Ms. Rachel E. Herman  
 Mr. James C. Heryer  
 Mr. Richard J. Herz and Ms. Fran Lancaster  
 Mrs. Anne Hickok and Mr. Phillip Charlton  
 Mrs. Kimbrough and Dr. Edward Higgins  
 Mr. and Mrs. Thomas M. Higgins III  
 Athena Hill  
 Mr. and Mrs. Daniel L. Hinrichs  
 Prof. and Ms. Gary Hobin  
 Mr. Richard Huener and Mrs. Whitney Davis  
 Mr. John Hoffman  
 Mr. and Mrs. Sean Hogan  
 Jack and Karen Holland  
 Ms. Ann C. Holmes  
 Ms. Amanda and Mr. Bryce Holt  
 Mr. and Mrs. David H. Hughes Sr.  
 Mr. and Mrs. Steven H. Hughes  
 Mr. and Mrs. William W. Humphrey III  
 Mary and John Hunkeler  
 Mrs. Bebe Hunt  
 Ann Peterson Hyde  
 Mrs. Beth Ingram  
 Lynn and Bill Intrater  
 Mianne Irick  
 John and Jenny Isenberg  
 Mr. and Mrs. B. Caleb Jackson  
 Dr. and Mrs. Roger P. Jackson  
 Travis Jackson  
 Mr. and Mrs. Niles Jager  
 Eddie & Tammy James  
 Dr. Kelly James  
 Ms. MaryLou James and Mr. James C. Taylor  
 Vivien Jennings and Roger Doeren  
 Dr. and Mrs. Arthur B. Jenny  
 Mr. and Mrs. Bradford M. Johnson  
 Mr. and Mrs. Robert H. Johnson Jr.  
 Mr. and Mrs. Lynn R. Johnson  
 Mrs. Pamela and Mr. Mark Johnson  
 Dr. Richard Johnson  
 Mr. Stephen and Mrs. Beverly Johnston  
 Linda and Topper Johntz  
 Mrs. Carol Ogden Jones  
 Kathleen Jones  
 Mr. and Mrs. Richard F. Jones  
 Mr. and Mrs. Ronald F. Jones  
 Professor Tony Jones CBE and Ms. Patty Carroll  
 Mr. Charles Joss Jr. and Ms. Gloria Christison  
 Mr. and Mrs. Harvey L. Kaplan  
 Mrs. Rosemary Karp  
 Mr. and Mrs. Ward A. Katz  
 Ms. Charlotte Kemper Black  
 Everet Kerr and Tracy Gordon  
 Ms. Judy Kirk  
 Julie and Mike Kirk  
 Mr. and Mrs. William P. Kline  
 Ms. Rozanne Klinzing  
 Dr. and Mrs. Douglas J. Knop  
 Mr. and Mrs. Stuart A. Knutson  
 Mrs. Constance S. Koester  
 Dr. and Mrs. Paul G. Koontz Jr.  
 Mr. and Mrs. William J. Kornitzer  
 Mr. and Mrs. William B. Kort  
 Mrs. Leslie and Mr. Tim Kostner  
 Mr. and Mrs. Douglas M. Krebs  
 Mr. and Mrs. Curtis Krizek  
 Mr. and Mrs. George P. Kroh  
 Greg La Rue and Kristen Liebert  
 Mike and Christy LaHood  
 Ms. Cynthia Lamas  
 Mr. and Mrs. Robert J. Lamkey  
 Mr. and Mrs. Asher C. Langworthy Jr.  
 Ms. Sandra A.J. Lawrence & Dr. Willie E. Lawrence Jr.  
 Mrs. Stephanie and Mr. James Lawrence  
 Ms. Susan Lawrence  
 Dr. and Mrs. Joel M. Leibsohn  
 Jeanne Levy  
 Ms. May Liang and Mr. James Lintott  
 Louise Liepold  
 Dr. and Mrs. Frederick B. Lintecum  
 Drew and Becky Loboda  
 Mr. Michael Murphy and Ms. Mary D. Lockton  
 Mr. Frank Loeffler & Ms. Phyllis Carozza  
 Mr. and Mrs. Fred J. Logan Jr.  
 Mr. Donald Loncasty and Mr. Charles Bruffy  
 Christopher and Angie Long  
 Mrs. Ida M. Long  
 Mr. and Mrs. Jay Longbottom  
 Mrs. Kimberly and Dr. Aaron Lott  
 Michelle Lour  
 Mayor Quinton Lucas and Katherine Catter  
 Patrick Mahomes and Brittany Matthews  
 Ann and Jack Mahurin  
 Mr. and Mrs. James R. Majerle  
 Mr. and Mrs. F. Lee Major II (Lindsay)  
 Mr. James M. Maloff III  
 Anne Manning and Lisa Soukup  
 Mrs. Betty Jo Marder  
 Mr. and Mrs. Bary L. Marquardt  
 John and Shirleyn Marshall  
 Michelle Matthews  
 Mr. and Mrs. A. Ford Maurer  
 Albert and Sandra Maro  
 Mr. and Mrs. Carl L. McCaffree  
 Mrs. William H. McCluskey

## PATRON

---

Ms. Ann McCray  
Mr. P. Alan McDermott  
Mr. Jay H. McDonald  
Steve and Mary Anne McDowell  
Mrs. Joan McGee  
Doug and Nina McKenna  
Mr. and Mrs. C. Patrick McLarney  
Mrs. Siobhan McLaughlin Lesley  
Dr. and Mrs. Douglas McNair  
Dr. Richard McNally and Misty McNally  
Mrs. Marilyn Melcher  
Mrs. Freda Mendez Smith and Mr. Robert Smith  
Mrs. Lenore Meng  
Ms. Barbara Messner  
Mrs. Yvette and Mr. Joseph Miceli  
Mr. John and Mrs. Jacqueline Middelkamp  
Kathy and Bill Migneron  
Mr. and Mrs. Kamal Mikhail  
Mr. Edward Milbank  
Sharon and Michael Milens  
Mr. and Mrs. Douglas C. Miller  
Mr. and Mrs. John L. Miller  
Mr. and Mrs. Larry C. Miller  
Patricia Cleary Miller, Ph.D  
Mr. Stephen and Mrs. Susan Miller  
Ms. Rebecca Minion  
Mr. C. Michel Minor  
Mrs. Marilyn and Mr. John Mitchell  
Dr. and Mrs. David L. Moore  
Mrs. Jehan and Mr. Daryl Moore  
Mr. Tim and Mrs. Diana Moormeier  
Mr. and Mrs. George W. Morris Jr.  
Dr. Harold Morris and Dr. Melinda Estes  
Christopher and Amber Mounts  
Dr. Donald Mrozek and Mr. Richard Dorman  
Mr. and Mrs. Walter R. Muff  
Ben Murrell and Ashly Frenzl  
Ms. and Mr. Stacie Needham  
Mrs. Barbara K. Nelson  
Roger Nelson  
Dr. and Mrs. Fred S. Neuer  
Dr. Mark Neustrom  
Mr. F. Peter Newcomer  
Charlie and Kay Newell  
Henry and Cara Newell  
Maggan Newland and Jon Henry  
Mr. and Mrs. David A. Nicely

Steve and Marianne Noll  
Dr. Regina Nouhan and Mr. John Eck  
Dr. Edward and Mrs. Chris Null  
Janet O'Bannon and William Kalt  
Mrs. Daly O'Brien  
Mrs. Jean A. O'Brien  
Ms. Patricia O'Dell and Todd Schulte  
Mr. Alejandro and Mrs. Mary Ogata  
Ms. Marilyn O'Hearne  
Mr. and Mrs. Charles R. Olsen  
Mr. and Mrs. Richard M. Orr  
Mr. and Mrs. Michael C. O'Shaughnessy  
Dr. and Mrs. R. Lyman Ott  
Mr. Michael Otto and Ms. Patricia Moore  
Mr. and Mrs. Richard F. Owen  
Mrs. Florence Pack  
Mr. and Mrs. Louis D. Pack  
Mrs. Marta Padula  
Major and Judy Park  
Betsy and Geoff Parker  
Mr. and Mrs. John H. Parker  
Mr. and Mrs. William H. Parkerson  
Mr. and Mrs. Arthur A. Parks  
Mr. and Mrs. Craig W. Patterson  
Mr. Stephen Paul and Ms. Carol Zastoupil  
Mr. and Mrs. Frank Paxton III  
Mr. and Mrs. Thomas F. Pearson Jr.  
Mr. Matthew Peddie and Dr. Jessica Heimes  
Mr. and Mrs. Bruce E. Pendleton  
Mr. Byron and Mrs. Kate Pendleton  
Mr. and Mrs. Reuben Perin  
Sam and Connie Perkins  
Mr. and Mrs. John S. Petrow  
Ms. Leslie Pfriem  
Mrs. Betsy Piebenga  
Mr. Lynn J. Piller  
Dr. Susan Pingleton  
Mrs. Mary Ann Pinkerton  
Mr. and Mrs. Kevin M. Pistilli  
Dr. K. Craig and Linna Place  
Dr. and Mrs. Timothy Pluard  
Mr. James Polsinelli  
Mr. and Mrs. William T. Popplewell  
Drs. Charles and Susan Porter  
Mr. and Mrs. Joseph E. Poskin  
Mr. David and Mrs. Anne Riker Powell  
Mr. and Mrs. George E. Powell III

Nicholas and Mary Ann Powell  
Mr. Peter and Mrs. Cappy Powell  
Mr. and Mrs. David W. Preston  
Mrs. Merry and Mr. Robert Quackenbush  
Mr. and Mrs. Deborah Quirk  
Kurt Rasmussen  
Mr. G. Sullivan Read and Ms. Maureen Scribner-Read  
Jeanna Redick  
Mr. and Mrs. Jerry D. Reece  
Mr. Bruce Reed and Mrs. Page Branton Reed  
Dr. Gerald and Mrs. Camille Reid  
Mary and Dr. Stephen Reintjes  
Mr. and Mrs. Douglas Reitz  
Mr. and Mrs. Grant U. Renne III  
Mr. Robert and Mrs. Sheri Reymond  
Mr. Boyce Richardson and Dr. Quyen Dam  
Dr. Louis E. and Leah Ridgway  
Mr. and Mrs. Jerome D. Riffel  
Mr. and Mrs. George Robbins  
Ms. Laura Robinson  
Mr. and Mrs. Leonard C. Rodman  
Dr. and Dr. Joseph J. Roh  
Ms. Jean Rosenthal and Mr. Dave Kingsley  
Connie and David Ross  
Mr. Joshua and Ms. Ann Rowland  
Mr. and Mrs. David W. Russell  
Howard and Corrinne Russell  
Mr. Jack and Mrs. Jenney Ryan  
Mr. and Mrs. Matthew Ryan  
Mr. Tom and Mrs. Cynthia Ryan  
Ms. Carmen M. Sabates  
Dr. and Mrs. Daniel L. Scharf  
Charles and Lisa Schellhorn  
Mr. and Mrs. Michael D. Schlem  
Lisa and Chuck Schmitz  
Mr. and Mrs. C. Fred Schoell  
Mr. and Mrs. Mark H. Schonwetter  
Mr. and Mrs. James Schorgl  
Stephen and Dolores Schroff  
Mr. Thomas Schult and Ms. Margo Soule  
Mary Holcomb & Mark Schulte  
Ms. Kristin Schultz  
Mr. and Mrs. Michael A. Schultz  
Mrs. Betty C. Scott  
Michael Seck and Sharon Mossman  
James & Stephanie Siegfried



---

Luke and Sarah Selby  
Mr. and Mrs. William H. Shackelford III  
Dr. Stanley and Vicki Sharp  
Mr. Phillip F. Cardarella and Ms. Katheryn J. Shields  
Mrs. Susann Shinkle  
Rebecca Shriver  
Mr. and Mrs. Leland Shurin  
Myra and Lester Siegel  
Dr. Ashley and Mr. Chase Simmons  
Mr. and Mrs. Christopher Sirridge  
Chris and Emily Smart  
Mr. Gary Smith  
Scott and Kathy Smith  
Mr. and Mrs. Frederick M. Solberg Jr.  
Mr. Bradley Sorenson  
Mrs. Michaela and Ben Sosinski  
Mr. and Mrs. Charles S. Sosland  
Mr. and Mrs. Neil N. Sosland  
Mr. Alan S. Edelman and Dr. Deborah A. Sosland-Edelman  
Mrs. Shirley Spiegel  
Mrs. Barbara D. Spilker  
Mr. and Mrs. Robert Sprague  
Mr. and Mrs. Peter Stadler  
James and Alicia Starr  
Jeffrey Statland  
Mrs. Mina and Mr. Lance Steen  
Mr. and Mrs. Jim Stillely  
Eric and Amanda Stone  
Mr. Bradley and Mrs. Cynthia Strecker  
Mr. Stephen and Mrs. Mary Stringer  
Dr. and Mrs. Jack L. Stuber  
Ann and John Sundeen  
Ms. Susan Susz  
Mr. and Mrs. Daniel S. Sweeney  
Ms. Lori Tan  
Dr. and Mrs. Joseph Tauber  
Mr. and Mrs. Darren Taylor  
Mr. Michael and Mrs. Nancy Thiessen  
Eden and David Thorne  
Mr. and Mrs. Al Tikwart Jr.  
Ann and Jim Tinsman  
Mr. and Mrs. James C. Tomlinson  
Mr. H. Guyon Townsend III  
Mr. and Mrs. Steven F. Trenton  
Reverend Paul Turner

Mr. and Mrs. Paul Uhlmann III  
Mr. Art Umali and Ms. Dawn Miller  
Ms. Kirby Upjohn  
Mrs. Gail and Dr. Charles Van Way  
Mrs. Ingrid and Mr. Rob VanBiber  
Russell and Mary Vandekauter  
Mr. and Mrs. Kirk W. Vaughan  
Mr. Shawn Vogler  
John Wagner and Deborah Gifford  
Mrs. Karyn Walden-Forrest and Mr. Dave Walden  
Ms. Dale Walker  
Mr. and Mrs. Thomas Walsh  
Mr. and Mrs. James A. Ward  
Mr. Michael and Mrs. RayeAnn Ward  
Mr. and Mrs. Steven S. Waterman  
Linda Watson  
Mr. Maurice Watson  
Mr. James and Mrs. Sarah Weitzel  
Mr. and Mrs. Clyde F. Wendel  
Mr. and Mrs. Robert H. West  
Molly & Eric Westphal  
Mr. and Mrs. Frank J. Wewers  
Dr. and Mrs. James H. Whitaker  
Mr. Jerry White and Ms. Cyprienne Simchowicz  
Robert Whitmer  
Mr. Michael Whitsitt

Mr. Reeves W. Wiedeman  
Mr. Ted and Mrs. Molly Wiedeman  
Mr. and Mrs. Thomas Willard  
Mr. Brian D. Williams  
Dr. and Mrs. Bernard T. Williams  
Dr. Homer and Mrs. Mary K. Williams  
Mr. and Mrs. Jerry and Debbie Williams  
Roslyn and Russell Williams  
Dr. and Ms. Stephen Williamson  
Mr. Jon and Mrs. Asli Willy  
Marc and Elizabeth Wilson  
Ms. Elizabeth H. Winetroub  
Mr. and Mrs. W. Hunter Wolbach  
Mr. William V. Wolbach  
Ronald and Marilyn Wollard  
Ms. Heather Wong  
Mrs. Marian Wood  
Mr. and Mrs. Thomas J. Wood  
Dr. Gerald Woolsey  
Mr. and Mrs. Fred G. Wooster  
Ms. Kim Wu  
Dr. and Mrs. John D. Yeast  
Brooke Robinson Yoder  
Karen and John Yungmeyer  
Mark Zimmerman  
Mr. and Mrs. Karl Zobrist  
Ms. Beth and Mr. Bill Zollars

---

**For more information, please contact Sara Hale,  
Development Director, Society of Fellows, at  
[shale@nelson-atkins.org](mailto:shale@nelson-atkins.org), 816.751.0426.**

---

# 2022 – 2023 Business Council May 1, 2022 – April 30, 2023

## CHAIRMAN

---



## PRESIDENT

---



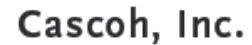
## DIRECTOR

---

### HUSCH BLACKWELL

## LEADER

---



## EXECUTIVE

---

21c Museum Hotel	Design Resources/Branded Custom Sportswear	Mazuma Credit Union
A. Zahner Company	Euronet Worldwide, Inc.	McCownGordon Construction
Bernstein-Rein Advertising, Inc.	Ferrell Capital, Inc.	Midwest Trust/ FCI Advisors
Blue Cross and Blue Shield of Kansas City	H&R Block, Inc.	Russell Stover Chocolates
BlueScope	Henderson Engineers, Inc.	Stinson LLP
BNIM Architects	Jones Development Company	Tnemec Company, Inc.
Burns & McDonnell	KC Current	US Bank Private Wealth Management
Compass Minerals	Lockton Companies, Inc.	VMLY&R

## PARTNER

---

American Century Investments	Gerson Family Foundation	MRI Global
Arvest Bank	Gilmore & Bell, PC	Platform Ventures
Barr-Thorp Electric	Global Prairie	PwC
BOK Financial	Hunt Midwest Enterprises, Inc.	Silver and Black Janitorial Services
Boulevard Brewing Company	Kansas City Life Insurance Company	Sporting Kansas City
Bryan Cave Leighton Paisner LLP	KCRise Capital	Stower's Institute for Medical Research
Copaken Brooks	Labconco Corporation	Suburban Lawn and Garden
DEMDACO	Lippert Mechanical Services	Tito's Handmade Vodka
Distribution By Air	McQuaid Brothers Remodeling Company	UBS Financial Services, Inc.
EPR Properties	Michael J. Rainen Family Foundation	UBM Financial Corp.
FCS Family Office		Zimmer Companies, Inc.
FORVIS		

## ASSOCIATE

---

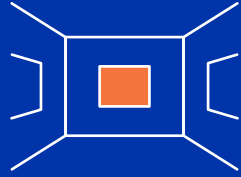
Allison Rank, Realtor	International Relations Council	Thelma's Kitchen
Charlie Hustle	Marlene's Kaleidoscope	United Way of Greater Kansas City
City Barrel Brewing Company	Mpress LLC	Vine Street Brewing
GEM Cultural and Educational Center	Perspective Architecture and Design, LLC	White & Associates Real Estate
Greater Kansas City Chamber of Commerce	The Raphael Hotel	

---

**For more information, please contact Shannon Lindgren, Senior Development Director, Institutional Giving, at [slindgren@nelson-atkins.org](mailto:slindgren@nelson-atkins.org), 816.751.0452.**

---

# By the Numbers



**12**

EXHIBITIONS OPENED



**274**

WORKS ACQUIRED



**\$14,116,567**

FUNDS RAISED



**508,131**

ANNUAL VISITORS



**31,639**

FESTIVAL ATTENDEES



**25,184**

STUDENTS TOURED



**5,010**

TIVOLI TICKETS SOLD

