



Curate Your Own Exhibition Card Game

Students can curate their own exhibitions of art from the Nelson-Atkins using our downloadable card game. Art cards feature 111 objects from the museum's permanent collection, including a special selection of 10 works from the exhibition, *Origins: Collecting to Create the Nelson-Atkins* (on view August 14, 2021–March 6, 2022). Also provided are 24 theme cards to help students plan their exhibitions, including a “choose your own theme” card for their original ideas.

CURATE YOUR OWN EXHIBITION

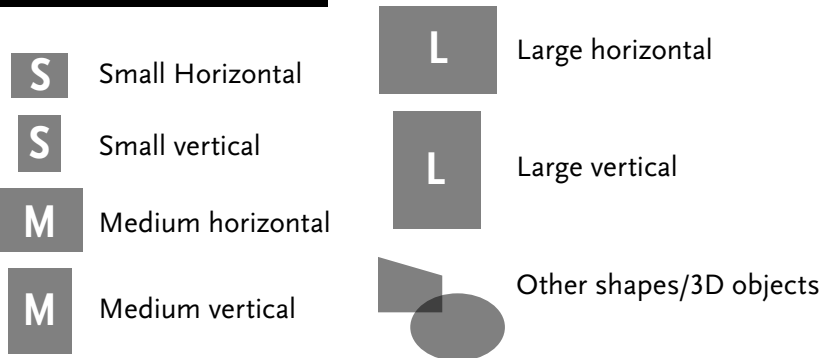
Museums make many choices when preparing and presenting works of art. Collections can be shared in a variety of ways to help people appreciate and understand the different cultures, ideas, experiences, and beliefs of the artists who created them.

In this activity, you will find 24 thematic cards that you can use to plan your own exhibition. Select one of these themes to build your exhibition around. A “choose your own theme” card has been provided for your original theme ideas.

Also included are 101 cards that feature works of art from the Nelson-Atkins collection. Each card shows an image of a work of art, and the caption lists details about that object. This information should help you in planning your own exhibition.

You can also visit nelson-atkins.org to learn more about works in our collection when you click [Visit & See](#) and [Search Collection!](#)

KEY TO IMAGE SIZES



CURATE YOUR OWN EXHIBITION



M

William Jurgens Hesthal, (American, 1908–1985). *Transfigured Night*, 1937–1939. Oil on masonite. Gift of Eleanore C. Blue, 78-38.
40 1/8 × 49 3/4 inches.

CURATE YOUR OWN EXHIBITION



L

Kehinde Wiley (American, born 1977). *Saint Adrian*, 2006. Oil on canvas. Gift of John and Sharon Hoffman, 2019.50. 108 x 82 1/2 inches.

CURATE YOUR OWN EXHIBITION



S

William Johnson (American, 1901-1970). *Going to Church*, ca. 1940-1941. Opaque watercolor on paper. Gift of Mr. and Mrs. C. Humbert Tinsman Jr. and Mr. and Mrs. James E.C. Tinsman in memory of C. Humbert and Julia Tinsman, 2002.12.5. 17 x 20 7/8 inches.

CURATE YOUR OWN EXHIBITION



M

Claude Monet (French, 1840–1926). *Boulevard des Capucines*, 1873–1874. Oil on canvas. Purchase: the Kenneth A. and Helen F. Spencer Foundation Acquisition Fund, F72-35.
43 3/8 × 36 1/4 inches.

The Nelson-Atkins Museum of Art 

CURATE YOUR OWN EXHIBITION



S

Seal Effigy Bowl, Chugach (Alutiiq), Southcentral Alaska, ca. 1780–1820. Wood (probably alder or birch). From the Estelle and Morton Sosland Collection, 2009.41.7.
3 5/8 × 8 × 12 1/4 inches.

The Nelson-Atkins Museum of Art 

CURATE YOUR OWN EXHIBITION



L

Raqib Shaw (Indian, born 1974). *Twilight Painting II*, 2012–2013. Oil, acrylic, enamel, glitter and rhinestones on Birch wood. Purchase: acquired through the generosity of the William T. Kemper Foundation-Commerce Bank, Trustee, 2014.1. 36 × 60 inches.

The Nelson-Atkins Museum of Art 

CURATE YOUR OWN EXHIBITION



M

John Singer Sargent (American, 1856–1925). *Study for "Spanish Dance"*, ca. 1879–1880. Oil on canvas. Gift of Julia and Humbert Tinsman, F83-49. 36 1/16 × 26 1/2 inches.

The Nelson-Atkins Museum of Art 

CURATE YOUR OWN EXHIBITION



L

Max Ernst (French, born Germany, 1891–1976). *Capricorn*, 1948. Bronze. Gift of the Hall Family Foundation, acquired from the Patsy and Raymond Nasher Collection, F99-33/6. 95 1/2 × 82 × 55 1/4 inches.

The Nelson-Atkins Museum of Art 

CURATE YOUR OWN EXHIBITION



S

Hieronymus Bosch (Netherlandish, ca. 1450–1516). *The Temptation of Saint Anthony*, ca. 1500–1510. Oil on panel. Purchase: William Rockhill Nelson Trust, 35-22. 20 5/16 × 15 inches.

The Nelson-Atkins Museum of Art 

CURATE YOUR OWN EXHIBITION



M

Emil Nolde (German, 1867–1956). *Masks*, 1911. Oil on canvas.
Gift of the Friends of Art, 54-90.
39 1/2 × 37 3/16 inches.

The Nelson-Atkins Museum of Art 

CURATE YOUR OWN EXHIBITION



L

Willem de Kooning (American, born Netherlands, 1904–1997).
Woman IV, 1952–1953. Oil, enamel, and charcoal on canvas.
Gift of William Inge, 56-128.
59 × 46 1/4 inches.

The Nelson-Atkins Museum of Art 

CURATE YOUR OWN EXHIBITION



M

Juan Gris (Spanish, 1887–1927). *Coffee Grinder and Glass*, 1915. Oil on paperboard. Gift of Earle Grant in memory of Gerald T. Parker, 71-22. 23 5/8 × 20 1/8 inches.

The Nelson-Atkins Museum of Art 

CURATE YOUR OWN EXHIBITION



L

Mask of the Bwadi bwa Kifwebe Society, Democratic Republic of the Congo, Songye peoples, late 19th century. Wood, pigment, fiber, hide and shell. Purchase: William Rockhill Nelson Trust through the George H. and Elizabeth O. Davis Fund, 92-18. 50 1/2 × 23 × 17 inches.

The Nelson-Atkins Museum of Art 

CURATE YOUR OWN EXHIBITION



L

Grace Hartigan (American, 1922–2008). *Broadway Restaurant*, 1957. Oil on canvas. Gift of William T. Kemper, F57-56. 79 × 62 3/4 inches.

The Nelson-Atkins Museum of Art 

CURATE YOUR OWN EXHIBITION



M

Edouard Manet (French, 1832–1883). *The Croquet Party* (*La partie de croquet*), 1871. Oil on canvas. Gift of Henry W. and Marion H. Bloch, 2015.13.11. 27 1/2 × 38 inches.

The Nelson-Atkins Museum of Art 

CURATE YOUR OWN EXHIBITION



L

Yinka Shonibare (English/Nigerian, born 1962). *Planets in My Head, Physics*, 2010. Mannequin, Dutch wax printed cotton, leather and fiberglass. Purchase: acquired through the generosity of G. Kenneth Baum in honor of Ann Baum on the occasion of her birthday, 2011.23. A-E. 50 × 26 3/8 × 19 5/8 inches.

The Nelson-Atkins Museum of Art 

CURATE YOUR OWN EXHIBITION



M

Edgar Degas (French, 1834–1917). *Rehearsal of the Ballet*, ca. 1876. Gouache and pastel over monotype on laid paper. Purchase: the Kenneth A. and Helen F. Spencer Foundation Acquisition Fund, F73-30. 36 × 41 1/2 × 4 inches.

The Nelson-Atkins Museum of Art 

CURATE YOUR OWN EXHIBITION

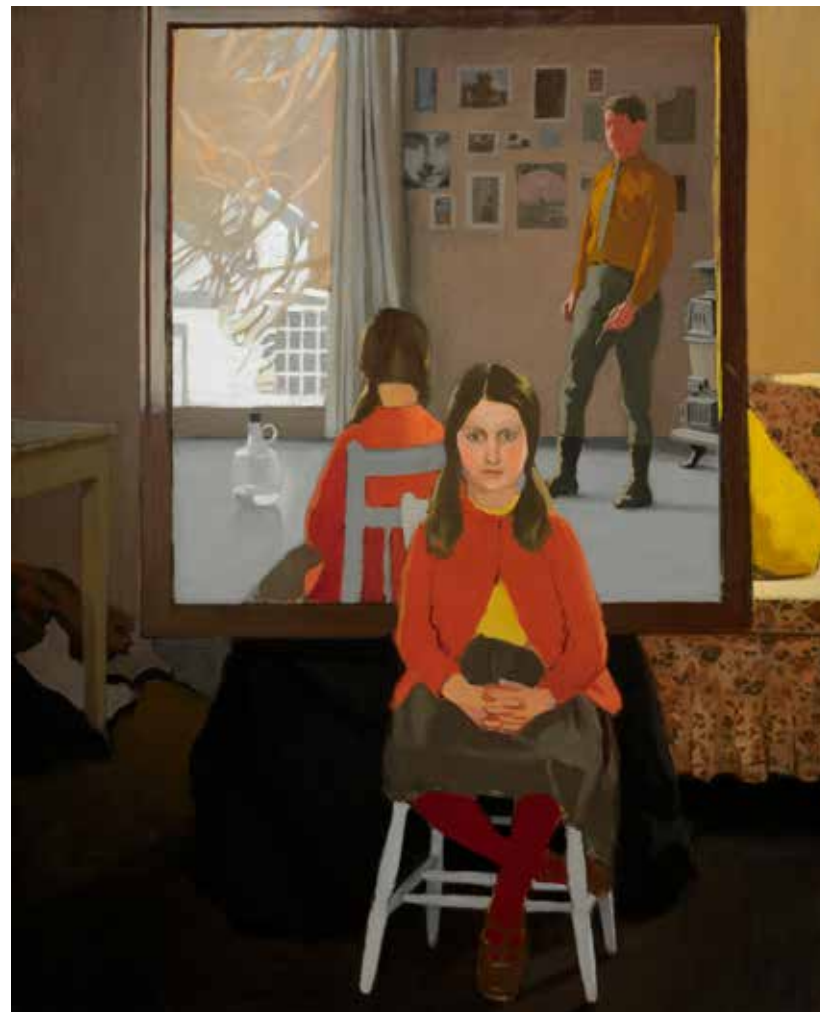


L

Roy Lichtenstein (American, 1923–1997). *Still Life in Yellow and Black*, 1972. Oil and Magna on canvas. Gift of the Friends of Art, F73-15. 56 × 40 inches.

The Nelson-Atkins Museum of Art 

CURATE YOUR OWN EXHIBITION



L

Fairfield Porter (American, 1907–1975). *The Mirror*, 1966. Oil on canvas. Gift of the Enid and Crosby Kemper Foundation, F86-25. 72 3/4 × 60 3/4 inches.

The Nelson-Atkins Museum of Art 

CURATE YOUR OWN EXHIBITION



S

Dave Heath (Canadian, born United States, 1931–2016).
Untitled, 1956. Book title: *Neither Peace Nor War*. Gelatin silver
print. Gift of the Hall Family Foundation, 2005.37.350.29.
3 1/4 × 4 3/4 inches.

The Nelson-Atkins Museum of Art 

CURATE YOUR OWN EXHIBITION



M

Roger Shimomura (American, born 1939). *Kabuki Party*, 1988.
Color screenprint on paper, 27/40. Gift of the Print Society,
F88-13.
14 × 26 inches.

The Nelson-Atkins Museum of Art 

CURATE YOUR OWN EXHIBITION



S

Lineage of Tosa School. Illustration based on the Sagabon printed edition of 1608, vol. 1 (87), Japanese, Late 17th-early 18th century. Series title: *Scenes from the Tales of Ise*. Poem sheet, colors and gold on paper. Purchase: William Rockhill Nelson Trust. 46-60/14. 9 1/4 × 6 15/16 inches.

The Nelson-Atkins Museum of Art 

CURATE YOUR OWN EXHIBITION



L

Shiokawa Bunrin (Japanese, 1808–1877). *River Landscape with Fireflies*, 1874. One of a pair of six-fold screens: ink with slight color and gold paint on paper. Purchase: William Rockhill Nelson Trust, 74-12/2. 68 × 148 1/2 inches.

The Nelson-Atkins Museum of Art 

CURATE YOUR OWN EXHIBITION



M

William Merritt Chase (American, 1849–1916). *Beach*, ca. 1895.
Oil on canvas. Bequest of Frances M. Logan, 47-106.
23 3/8 × 28 1/2 inches.

The Nelson-Atkins Museum of Art 

CURATE YOUR OWN EXHIBITION

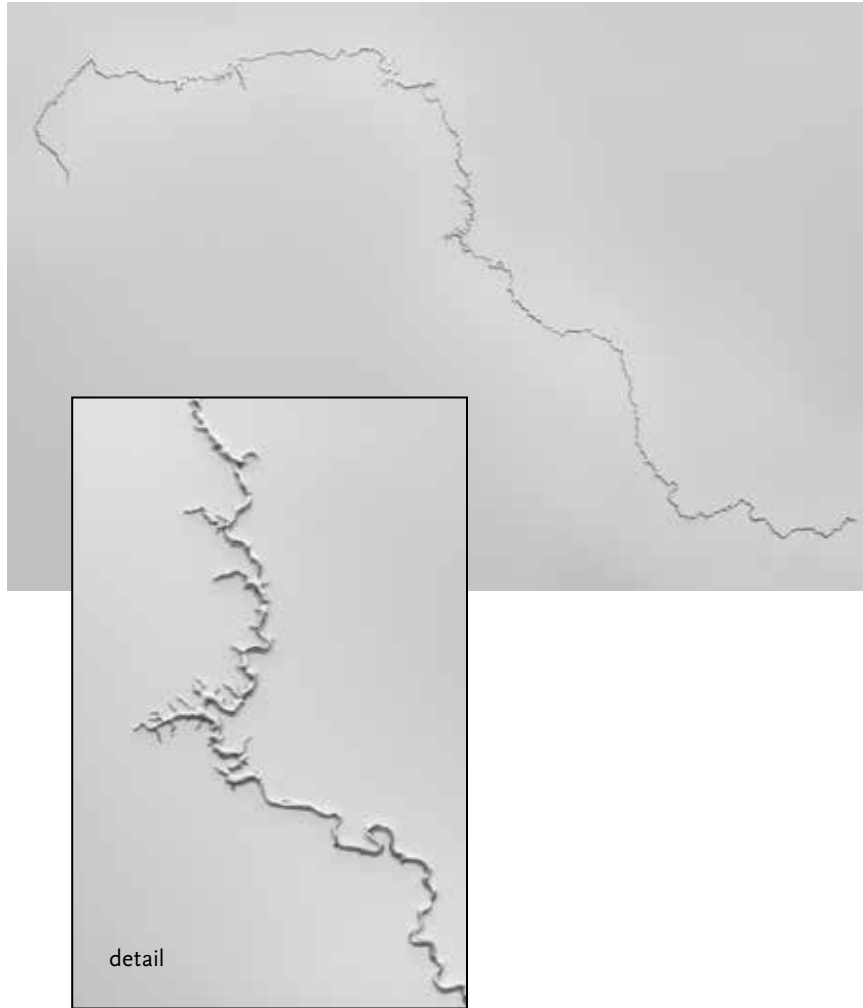


M

George Copeland Ault (American, 1891–1948). *January Full Moon*, 1941. Oil on canvas. Purchase: William Rockhill Nelson Trust [by exchange], 91-19.
28 13/16 × 34 3/4 inches.

The Nelson-Atkins Museum of Art 

CURATE YOUR OWN EXHIBITION



L

Maya Lin (American, born 1958). *Silver Missouri*, 2013.
Recycled silver. Purchase: acquired through the generosity of
the William T. Kemper Foundation–Commerce Bank, Trustee,
2013.35.A-D
103 1/2 × 180 1/2 × 2 inches.

The Nelson-Atkins Museum of Art 

CURATE YOUR OWN EXHIBITION



M

Wendy Red Star (North American Indian, Apsáalooke (Crow), Montana,
born 1981). *Spring*, 2006. Series title: *Four Seasons Series: Spring, Indian
Summer, Winter, Fall*. Archival pigment print on Sunset fiber rag
mounted on dibond. Purchase: A. Keith Brodtkin Fund for the Acquisition
of Contemporary American Indian Art, 2015.33.3.
31 1/2 × 36 inches.

The Nelson-Atkins Museum of Art 

CURATE YOUR OWN EXHIBITION



L

Richard Diebenkorn (American, 1922–1993). *Interior with a Book*, 1959. Oil on canvas. Gift of the Friends of Art, F63-15. 70 × 64 inches.

The Nelson-Atkins Museum of Art 

CURATE YOUR OWN EXHIBITION



L

Kerry James Marshall (American, born 1955). *Memento #5*, 2003. Acrylic and glitter on paper adhered to unstretched canvas banner. Purchase: acquired through the generosity of the William T. Kemper Foundation–Commerce Bank, Trustee, 2003.24. 9 × 13 feet.

The Nelson-Atkins Museum of Art 

CURATE YOUR OWN EXHIBITION



M

Petrus Christus (Netherlandish, ca. 1410–1475/1476). *Virgin and Child in a Domestic Interior*, ca.1460–1467. Oil on wood panel. Purchase: William Rockhill Nelson Trust, 56-51. 33 3/4 × 26 7/16 inches.

The Nelson-Atkins Museum of Art 

CURATE YOUR OWN EXHIBITION



L

John Singer Sargent (American, 1856–1925). *Mrs. Cecil Wade*, 1886. Oil on canvas. Gift of the Enid and Crosby Kemper Foundation, F86-23. 66 × 54 1/4 inches.

The Nelson-Atkins Museum of Art 

CURATE YOUR OWN EXHIBITION



L Pierre Bonnard (French, 1867–1947). *The White Cupboard*, 1931. Oil on canvas. Gift of Henry W. and Marion H. Bloch, 2015.13.1. 63 1/4 × 50 3/4 inches.

CURATE YOUR OWN EXHIBITION



L Robert Rauschenberg (American, 1925–2008). *Tracer*, 1963. Oil and silkscreen on canvas. Purchase: Nelson Gallery Foundation, F84-70. 72 1/2 × 60 3/8 inches.

CURATE YOUR OWN EXHIBITION



L

Winged Genie Fertilizing a Date Tree, Assyrian, 884–860 B.C.E.
Limestone. Purchase: William Rockhill Nelson Trust, 40-17.
91 1/4 × 71 1/4 inches.

The Nelson-Atkins Museum of Art 

CURATE YOUR OWN EXHIBITION



M

Paul Gauguin (French, 1848–1903). *Autumn in Brittany*, 1889.
Oil on canvas. Gift of Henry W. and Marion H. Bloch, 2015.13.9.
47 1/4 × 40 1/4 inches.

The Nelson-Atkins Museum of Art 

CURATE YOUR OWN EXHIBITION



L *Lion, Greek, 325 B.C.E.* Pentelic marble. Purchase: William Rockhill Nelson Trust, 33-94.
44 1/2 × 80 1/2 × 22 3/4 inches.

CURATE YOUR OWN EXHIBITION



S *Shield, Arikara, North Dakota, ca. 1850.* Buffalo rawhide, native tanned leather, and native pigment. Purchase: Donald D. Jones Fund for American Indian Art, 2004.35
Diameter: 20 inches.

CURATE YOUR OWN EXHIBITION



M

Etim Abassi Ekpenyong (Nigerian, active early 20th century). *Water Deity Headdress*, Early 20th century. Wood, goatskin, and pigment. Purchase: William Rockhill Nelson Trust through the George H. and Elizabeth O. Davis Fund, 94-30. 31 × 40 × 10 1/2 inches.

The Nelson-Atkins Museum of Art 

CURATE YOUR OWN EXHIBITION



S

Attributed to Master Muhammad Siyah Qalam (Persian, 1469–1525). *Birds and Beasts in a Flowery Landscape*, Late 15th century. Ink on paper. Purchase: William Rockhill Nelson Trust, 43-6/2. 6 1/2 × 9 3/4 inches.

The Nelson-Atkins Museum of Art 

CURATE YOUR OWN EXHIBITION

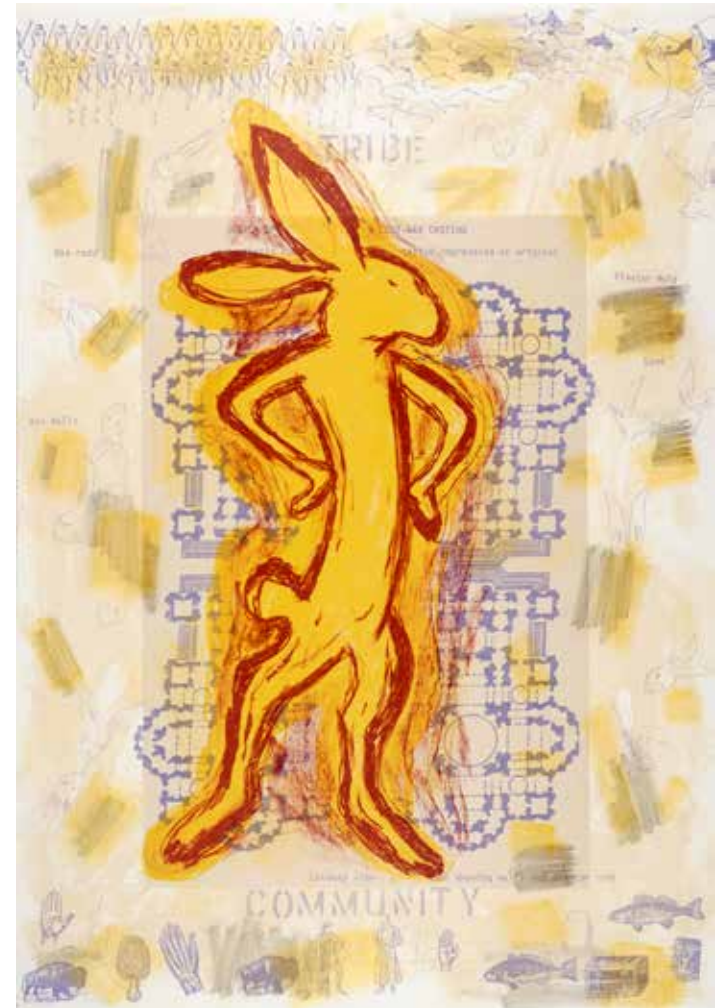


M

Dancing Ganesha, Indian, 9th century C.E. Light gray sandstone. Purchase: William Rockhill Nelson Trust, 70-45. 39 × 20 1/4 × 8 1/4 inches.

The Nelson-Atkins Museum of Art 

CURATE YOUR OWN EXHIBITION



M

Jaune Quick-to-see Smith (North American Indian, born 1940). *Tribe/Community*, 1996. Color lithograph on Arches paper. Purchase: acquired through the generosity of the Print Society in honor of Robert S. Everitt and the late Paulina Everitt, F96-20/2. 36 × 24 5/8 inches.

The Nelson-Atkins Museum of Art 

CURATE YOUR OWN EXHIBITION



L

Attributed to Li Cheng (Chinese, 919–967 C.E.). *A Solitary Temple Amid Clearing Peaks*, Northern Song Dynasty (960–1127). Hanging scroll, ink and slight color on silk. Purchase: William Rockhill Nelson Trust, 47-71. 88 × 22 1/2 inches.

The Nelson-Atkins Museum of Art 

CURATE YOUR OWN EXHIBITION



M

Thomas Cole (American, born England, 1801–1848). *The Mill, Sunset*, 1844. Oil on canvas. Purchase: William Rockhill Nelson Trust through The Ever Glades Fund and exchange of a gift from the Howard P. Treadway and Tertia F. Treadway Collection, 2004.29. 37 × 46 inches.

The Nelson-Atkins Museum of Art 

CURATE YOUR OWN EXHIBITION



M

Vincent van Gogh (Dutch, 1853–1890). *Olive Trees*, June/September 1889. Oil on canvas. Purchase: William Rockhill Nelson Trust, 32-2.
37 3/4 × 45 1/2 inches

CURATE YOUR OWN EXHIBITION



L

Claude Monet (French, 1840–1926). *Water Lilies*, ca. 1915–1926. Oil on canvas. Purchase: William Rockhill Nelson Trust, 57-26.
80 1/4 × 169 3/8 inches.

CURATE YOUR OWN EXHIBITION



L Ursula von Rydingsvard (American, born Germany, 1942). *Three Bowls*, 1990. Cedar and graphite. Purchase: William Rockhill Nelson Trust through the generosity of the Hall Family Foundation, the George H. and Elizabeth O. Davis Fund, G. Kenneth Baum, and Judy and Alan Kosloff, 99-9 A-C.
9 feet 4 inches × 15 feet 10 inches × 8 feet.

The Nelson-Atkins Museum of Art 

CURATE YOUR OWN EXHIBITION



L Duane Hanson (American, 1925–1996). *Museum Guard*, 1975. Polyester, Fiberglass, oil, and vinyl. Gift of the Friends of Art, F76-40.
69 × 21 × 13 inches.

The Nelson-Atkins Museum of Art 

CURATE YOUR OWN EXHIBITION



M

Constantin Brancusi (1876–1957). *Portrait of Nancy Cunard* (also called *Sophisticated Young Lady*), 1925–1927. Walnut on marble base. Gift of the Hall Family Foundation, acquired from the Patsy and Raymond Nasher Collection, F99-33/3. 24 3/4 × 12 1/2 × 4 3/8 inches.

The Nelson-Atkins Museum of Art 

CURATE YOUR OWN EXHIBITION



S

Commemorative Head of an Oba (King), Benin Kingdom, 16th century. Brass. Purchase: William Rockhill Nelson Trust through the generosity of Donald J. and Adele C. Hall, Mr. and Mrs. Herman Robert Sutherland, and an anonymous donor; The Nelson Gallery Foundation; and the exchange of a Trust property, 87-7. 9 1/8 inches.

The Nelson-Atkins Museum of Art 

CURATE YOUR OWN EXHIBITION

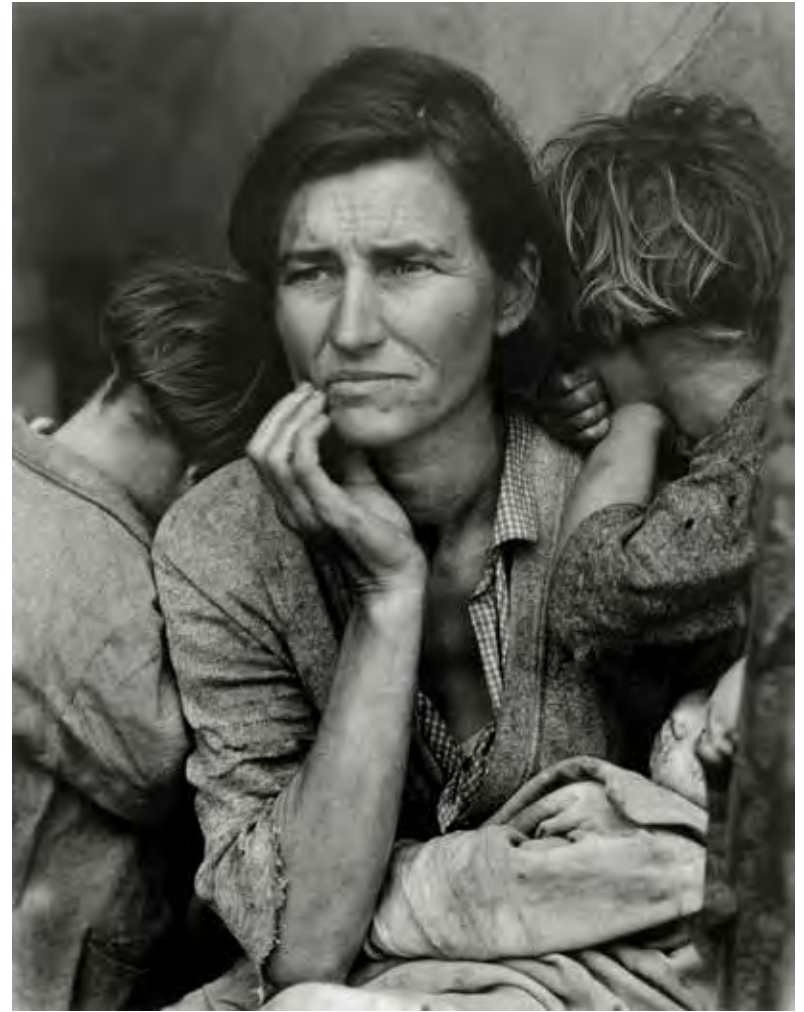


L

Guanyin of the Southern Sea, Chinese, Liao (907–1125) or Jin Dynasty (1115–1234). Wood with multiple layers of paint. Purchase: William Rockhill Nelson Trust, 34-10. 95 × 66 × 43 1/2 inches.

The Nelson-Atkins Museum of Art 

CURATE YOUR OWN EXHIBITION



S

Dorothea Lange (American, 1895–1965). *Migrant Mother*, Nipomo, California, March 1936; printed ca. 1960. Gelatin silver print. Gift of Hallmark Cards, Inc., 2005.27.305. 13 5/16 × 10 3/8 inches.

The Nelson-Atkins Museum of Art 

CURATE YOUR OWN EXHIBITION



S

Fall of the Rebel Angels, Italian, Early 18th century. Ivory.
Purchase: William Rockhill Nelson Trust through the George H. and Elizabeth O. Davis Fund, 69-2.
10 3/4 × 6 inches.

The Nelson-Atkins Museum of Art 

CURATE YOUR OWN EXHIBITION



S

Josef Koudelka (Czech, born 1938). *Jarabina*, Czechoslovakia, 1963; printed 1976. Gelatin silver print. Gift of the Hall Family Foundation, 2016.75.131.
9 3/8 × 14 inches.

The Nelson-Atkins Museum of Art 

CURATE YOUR OWN EXHIBITION



L

Kente Cloth (Nsasawa), Akan; Asante subgroup, Early 20th century. Silk and pigments. Purchase: the Shirley and Barnett Helzberg Fund in support of the African Art department, 2013.2.3.
86 × 105 inches.

The Nelson-Atkins Museum of Art 

CURATE YOUR OWN EXHIBITION



L

Bridget Riley (English, born 1931). *Arrest 2*, 1965. Acrylic on linen. Purchase: acquired through the generosity of the William T. Kemper Foundation–Commerce Bank, Trustee, 2001.1.
79 3/8 × 77 3/4 inches.

The Nelson-Atkins Museum of Art 

CURATE YOUR OWN EXHIBITION

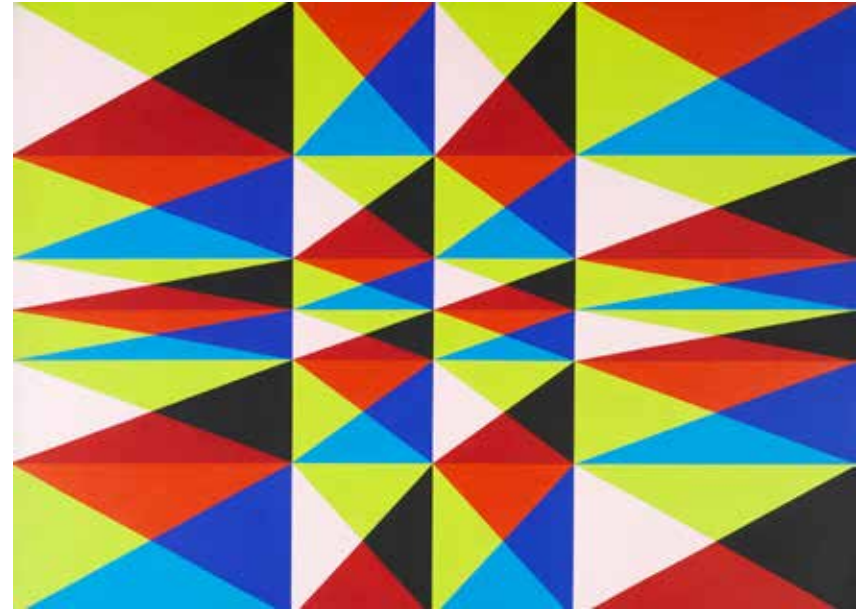


L

Franz Kline (American, 1910–1962). *Turin*, 1960. Oil on canvas. Gift of Mrs. Alfred B. Clark through the Friends of Art, F61-23. 81 1/2 × 96 3/4 inches.

The Nelson-Atkins Museum of Art 

CURATE YOUR OWN EXHIBITION



L

Dean Fleming (American, born 1933). *Lime Line*, 1965. Acrylic on canvas. Purchase: William Rockhill Nelson Trust through exchange of the gifts of the Eighth Mid-America Annual Exhibition to the Mid-America Annual Collection, Mrs. A. W. Erickson, Helen Mag Wolcott, and Mr. and Mrs. F. Russell Millin, 2009.33. 47 3/4 × 66 inches.

The Nelson-Atkins Museum of Art 

CURATE YOUR OWN EXHIBITION



M

Jonathan Green (American, born 1955). *The Reception*, 1989. Hand-pulled lithograph on paper, ed. 21/25. Gift of Gregory M. Glore, 2011.46. 34 1/4 × 31 1/2 inches.

The Nelson-Atkins Museum of Art 

CURATE YOUR OWN EXHIBITION



S

Nicholas Nixon (American, born 1947). *11th Grade English class discussion of "Pride and prejudice," Boston Latin School, 1966*. Gelatin silver print. Gift of Hallmark Cards, Inc., 2005.27.2016. 17 7/8 × 22 1/4 inches.

The Nelson-Atkins Museum of Art 

CURATE YOUR OWN EXHIBITION



M

Jacob Lawrence (American, 1917–2000). *The 1920's...The Migrants Cast Their Ballots*, 1974. Color Serigraph, 50/125. Gift of Lorillard, F76-26/8. 32 × 24 7/8 inches.

The Nelson-Atkins Museum of Art 

CURATE YOUR OWN EXHIBITION



L

Bisa Butler (American, born 1973). *Kindred*, 2019. Cotton, wool, silk, velvet and polyester, quilted and appliquéd. Purchase: William Rockhill Nelson Trust through the George H. and Elizabeth O. Davis Fund, 2019.45. 86 7/8 × 66 5/8 inches.

The Nelson-Atkins Museum of Art 

CURATE YOUR OWN EXHIBITION



L

Richard M. Hollander (American, 1911–1992). *Family Life—The Picnic*, 1981–1983. Welded steel and aluminum. Purchase: William Rockhill Nelson Trust through the George H. and Elizabeth O. Davis Fund, 86-21 A-G. 60 × 66 × 132 inches.

The Nelson-Atkins Museum of Art 

CURATE YOUR OWN EXHIBITION



S

Eugene Richards (American, born 1944). *Grandmother, Brooklyn, New York*, 1993. Gelatin silver print. Gift of the Hall Family Foundation, 2018.20.7. 15 5/16 × 22 7/8 inches.

The Nelson-Atkins Museum of Art 

CURATE YOUR OWN EXHIBITION



M

Gordon Parks (American, 1912–2006). *Untitled, Miami, Florida* 1970; printed 2015. Gelatin silver print. Anonymous gift, 2019, 2019.14.11.
15 15/16 × 19 13/16 inches

The Nelson-Atkins Museum of Art 

CURATE YOUR OWN EXHIBITION



M

Gonzales Coques (Flemish, 1614–1684). *Family Portrait in a Landscape*, 17th century. Oil on wood panel. Purchase: William Rockhill Nelson Trust, 32-18.
23 × 32 inches.

The Nelson-Atkins Museum of Art 

CURATE YOUR OWN EXHIBITION



L

Metjetji with His Sons, Egyptian, ca. 2375–2345 B.C.E.
Limestone with paint. Purchase: William Rockhill Nelson Trust,
52-7/1.
56 × 30 1/2 inches.

The Nelson-Atkins Museum of Art 

CURATE YOUR OWN EXHIBITION



M

Joseph Hirsch (American, 1910–1981). *Lynch Family*, 1946. Oil on
canvas. Gift of the Friends of Art, 46-82.
45 1/2 × 43 1/2 inches.

The Nelson-Atkins Museum of Art 

CURATE YOUR OWN EXHIBITION



M

Etienne Aubry (French, 1745–1781). *The First Lesson of Fraternal Friendship*, 1773 or 1775. Oil on canvas. Purchase: William Rockhill Nelson Trust, 32-167. 38 5/8 × 46 inches.

CURATE YOUR OWN EXHIBITION



L

Lorenzo Ghiberti (Italian, Florentine, 1378–1455). *The Gates of Paradise*, 1425-1452; cast 1990. Gilded bronze, with iron. Promised gift of Paul DeBruce and Linda Woodsmall-DeBruce. 18.2017.1-31. 197 1/2 × 115 3/4 × 8 1/2 inches.

CURATE YOUR OWN EXHIBITION



M

Karsten Creightney (American, born 1976). *Roadside Gambler*, 2013. Three-color linocut, edition 33/40. Gift of Joe and Barb Zanatta in memory of Robert W. Carlson, 2013.30. 23 x 30 inches.

The Nelson-Atkins Museum of Art 

CURATE YOUR OWN EXHIBITION



M

Thomas Hart Benton (American, 1889–1975). *Farm Sale with Pop and the Boys*, 1962. Oil on canvasboard. Gift of Mr. and Mrs. Ewing Kauffman in commemoration of the 1985 Kansas City Royals Baseball Club's World Series Championship, F86-48. 24 1/8 x 21 1/4 in.

The Nelson-Atkins Museum of Art 

CURATE YOUR OWN EXHIBITION



M

George Caleb Bingham (American, 1811–1879). *Canvassing for a Vote*, 1852. Oil on canvas. Purchase: William Rockhill Nelson Trust, 54-9.
36 1/2 × 41 1/2 inches.

The Nelson-Atkins Museum of Art 

CURATE YOUR OWN EXHIBITION



M

Andrew Wyeth (American, 1917–2009). *Old Orchard*, 1957. Watercolor with India ink and Chinese white on paper. Bequest of Diana Reid Hearne James, F97-29/2.
24 7/8 × 32 3/4 inches.

The Nelson-Atkins Museum of Art 

CURATE YOUR OWN EXHIBITION



S

Ralston Crawford (American, 1906–1978). *Dancer and Meyer Kennedy at the Caravan Club, New Orleans, LA, 1953*. Gelatin silver print. Gift of Neelon Crawford, 2015.49.123. 9 1/2 × 7 9/16 inches.

The Nelson-Atkins Museum of Art 

CURATE YOUR OWN EXHIBITION



L

Germantown Eyedazzler Pictorial Serape, Diné (Navajo), Arizona or New Mexico, ca. 1885. Germantown 4-ply commercial wool yarn and cotton twine. Gift of Susan De Jong, 2017.79.1. 54 1/4 × 89 7/8 inches.

The Nelson-Atkins Museum of Art 

CURATE YOUR OWN EXHIBITION



S

Francis Frith (English, 1822–1898). *Dendera: Sculptured Relief*, 1857. Albumen print. Gift of Margaret Hall in memory of Alfred E. Miller, F91-51/23.
6 1/4 × 8 3/8 inches.

CURATE YOUR OWN EXHIBITION



L

Inner Coffin of Meret-it-es, Egyptian, ca. 380–250 B.C.E. Wood, pigment, gesso, and gilding. Purchase: William Rockhill Nelson Trust (by exchange), 2007.12.2.A,B.
A (top): 75 1/2 × 33 1/2 × 15 inches, B (bottom): 87 × 32 1/2 × 8 1/2 inches.

CURATE YOUR OWN EXHIBITION



L *Woman's Blanket*, Oto, Oklahoma, ca. 1910. Wool cloth, silk ribbon and glass beads. Purchase: William Rockhill Nelson Trust through exchange of the gifts of Mr. William L. Evans Jr., Mr. and Mrs. Robert Mann Jr., and other Trust properties, 89-38. 59 × 73 inches.

The Nelson-Atkins Museum of Art 

CURATE YOUR OWN EXHIBITION



L Philomene Bennett (American, born 1935). *Oranges*, 1962. Duco and oil on masonite. Gift to the 12th Mid-American Annual Exhibition to the Mid-America Annual Collection – Nelson Gallery Foundation, F62-32. 53 × 52 1/2 inches.

The Nelson-Atkins Museum of Art 

CURATE YOUR OWN EXHIBITION



M

Edouard Manet (French, 1832–1883). *White Lilacs in a Crystal Vase*, ca. 1882. Oil on canvas. Gift of Henry W. and Marion H. Bloch, 2015.13.12.
31 1/4 × 22 1/2 inches.

The Nelson-Atkins Museum of Art 

CURATE YOUR OWN EXHIBITION



L

Robert Mangold (American, born 1937). *Four Color Frame Painting #4*, 1984. Acrylic and black pencil on canvas. Purchase: acquired through the generosity of the William T. Kemper Foundation–Commerce Bank, Trustee, 2001.14. A-D.
120 × 84 inches.

The Nelson-Atkins Museum of Art 

CURATE YOUR OWN EXHIBITION



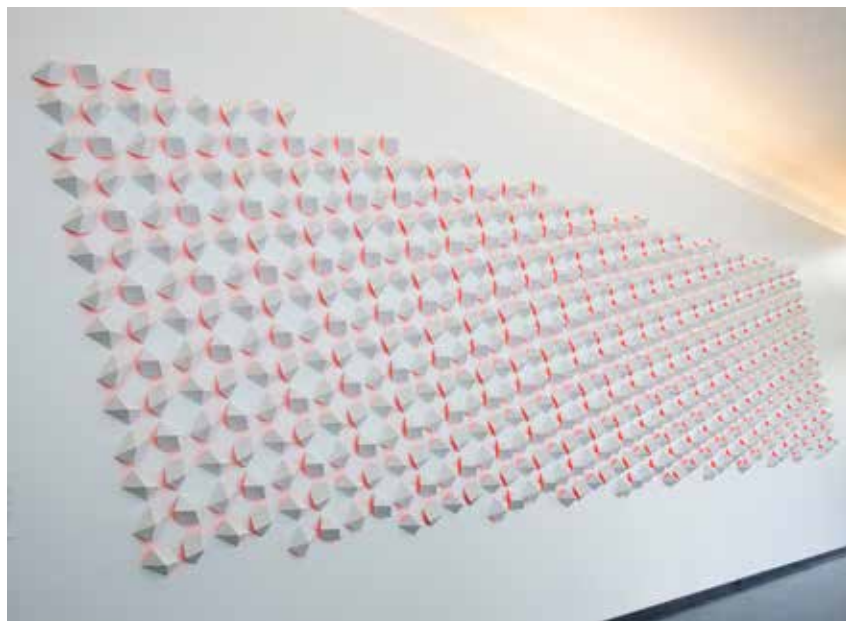
L Donald Judd (American, 1928–1994). *Large Stack*, 1968. Stainless steel and amber Plexiglas (10 units). Gift of the Friends of Art, F76-41. 15 feet 5 inches × 40 inches × 31 inches.

CURATE YOUR OWN EXHIBITION



L Isamu Noguchi (American, 1904–1988). *Six-Foot Energy Void*, 1971–1985. Swedish granite. Gift of the Hall Family Foundation, F99-33/68. 71 1/2 × 61 1/2 × 22 1/2 inches.

CURATE YOUR OWN EXHIBITION



L

Luis Tomasello (Argentinian, 1915–2014). *Chromoplastic Mural*, 2011. Bass wood and acrylic paint. Purchase: William Rockhill Nelson Trust through the George H. and Elizabeth O. Davis Fund, 2011.59.1-698.
123 × 444 inches.

The Nelson-Atkins Museum of Art 

CURATE YOUR OWN EXHIBITION



L

Magdalena Abakanowicz (Polish, 1930–2017). *Standing Figures, (Thirty Figures)*, 1994–1998. Bronze. Gift of the Hall Family Foundation, F99-33/1 A-DD.
A (figures): 6 feet 2 inches x 23 inches x 16 inches, B (decking): 54 feet 3 1/2 inches x 19 feet 8 1/2 inches.

The Nelson-Atkins Museum of Art 

CURATE YOUR OWN EXHIBITION



M

Jacob Lawrence (American, 1917–2000). *Home Chores*, 1945. Gouache and graphite on paper. Anonymous gift, F69-6. 37 1/2 × 29 1/4 inches.

CURATE YOUR OWN EXHIBITION



M

Vasily Kandinsky (Russian, 1866–1944). *Rose with Gray*, 1924. Oil on pulpboard. Gift of the Friends of Art, F62-9. 34 9/16 × 30 3/8 inches.

CURATE YOUR OWN EXHIBITION



M

Joan Miró (Spanish, 1893–1983). *Women at Sunrise*, 1946. Oil on canvas. Gift of the Friends of Art, 56-120. 22 5/8 × 31 3/4 inches.

The Nelson-Atkins Museum of Art 

CURATE YOUR OWN EXHIBITION



L

Frank Stella (American, born 1936). *Moultonville III*, 1965–1966. Enamel on canvas. Gift of the Friends of Art, F67-13. 88 × 123 inches.

The Nelson-Atkins Museum of Art 

CURATE YOUR OWN EXHIBITION



S

Roxanne Swentzell (North American Indian, Santa Clara, New Mexico, born 1962). *Kosa Appreciating Anything*, 1997. Clay and pigment. Purchase: the Donald D. Jones Fund for American Indian Art, 2003.22.
16 × 13 × 17 inches.

The Nelson-Atkins Museum of Art 

CURATE YOUR OWN EXHIBITION



S

Stanton MacDonald-Wright (American, 1890–1973). *Self-Portrait*, ca. 1907–1909. Oil on canvas. Gift of the Enid and Crosby Kemper Foundation, F89-39.
21 7/8 × 17 7/8 inches.

The Nelson-Atkins Museum of Art 

CURATE YOUR OWN EXHIBITION



M

Mary Cassatt (American, 1844–1926). *L'Enfant Blonde (The Blonde Child)*, ca. 1901. Oil on canvas. Bequest from the collection of Mr. and Mrs. W. J. Brace, 75-27.
28 15/16 × 23 3/8 inches.

The Nelson-Atkins Museum of Art 

CURATE YOUR OWN EXHIBITION



M

Pablo Ruiz y Picasso (Spanish, 1881–1973). *Woman Looking Out of a Window*, 1952. Aquatint. Gift of Jane Wade in memory of Curt Valentin, 55-73/14.
32 3/4 × 18 5/8 inches.

The Nelson-Atkins Museum of Art 

CURATE YOUR OWN EXHIBITION



M

Henri Matisse (French, 1869–1954). *Woman Seated Before a Black Background*, 1942. Gift of Henry W. and Marion H. Bloch, 2015.13.13.
29 3/4 × 26 inches.

The Nelson-Atkins Museum of Art 

CURATE YOUR OWN EXHIBITION



S

Profile portrait of Frederick Douglass, ca. 1858. Daguerreotype. Gift of Hallmark Cards, Inc. 2005.27.42.
3 5/8 × 6 3/8 inches.

The Nelson-Atkins Museum of Art 

CURATE YOUR OWN EXHIBITION



S

Harry Louis Freund (American, 1905–1999). *The Power and the Glory*, ca. 1946. Lithograph on paper. Gift of the artist, F99-5/2. 18 × 13 5/8 inches.

CURATE YOUR OWN EXHIBITION



L

Outer Coffin of Meret-it-es, Egyptian. ca. 380–250 B.C.E. Wood, pigment, and gesso. Purchase: William Rockhill Nelson Trust (by exchange), 2007.12.1.A-B. 33 1/2 × 36 × 94 1/2 inches.

CURATE YOUR OWN EXHIBITION



S

Ralston Crawford (American, 1906–1978). *Wrecked Car Grill*, 1964. Gelatin silver print. Gift of Neelon Crawford, 2015.49.125. 9 1/4 x 13 1/2 inches.

CURATE YOUR OWN EXHIBITION



L

Sarcophagus, Roman, 150–180 C.E.. Carrara marble. Purchase: William Rockhill Nelson Trust, 33-38. 21 1/2 x 85 x 23 1/2 inches.

CURATE YOUR OWN EXHIBITION



S

Relief of Mentu-em-hat and Anubis, Egyptian, 665–650 B.C.E.
Limestone with paint. Purchase: William Rockhill Nelson Trust,
48-28/1.
16 5/16 × 11 3/8 inches.

The Nelson-Atkins Museum of Art 

CURATE YOUR OWN EXHIBITION



L

Simone Leigh (American b. 1967). *Figure with Skirt*, 2018.
Terracotta, graphite, salt fired porcelain, steel, raffia. Purchase:
William Rockhill Nelson Trust through the George H. and
Elizabeth O. Davis Fund, 2018.571,2.
79 1/2 × 70 × 70 inches.

The Nelson-Atkins Museum of Art 

ORIGINS

CURATE YOUR OWN EXHIBITION

Origins Collector's Pack

In the first years of the Nelson-Atkins, choices had to be made about what art to collect for the new museum. The people responsible for creating the collection wanted to gather art from cultures around the world and throughout history. To help us learn more about how the collection was built, a special exhibition was developed: *Origins: Collecting to Create the Nelson-Atkins* (on view August 14, 2021 – March 6, 2022). Ten art cards featuring works from the exhibition have been added to this game to help tell the story of the museum's beginnings.

Imagine you could start a museum from scratch. Would you build an encyclopedic collection – one that features art from many cultures and places – or would you focus your mission on something more specific?

The newly added cards can be identified by the ORIGINS heading. You can use the expanded pack of art cards to plan your own exhibition with the existing themes or create an exhibition (or whole museum!) of your own choosing.

ORIGINS

CURATE YOUR OWN EXHIBITION

KEY TO IMAGE SIZES

 Small horizontal


 Small vertical

 Medium horizontal

 Medium vertical

 Large horizontal

 Large vertical

 Other shapes/3D objects

ORIGINS

CURATE YOUR OWN EXHIBITION



M

Lucas Cranach the Younger (German, 1515-1586).
Portrait of a Man, 1538. Oil on wood panel (beech).
Purchase: William Rockhill Nelson Trust, 31-112.
24 3/4 x 19 7/16 x 1 1/8 inches.

The Nelson-Atkins Museum of Art 

ORIGINS

CURATE YOUR OWN EXHIBITION



S

Raven Mask, Kwakwaka'wakw (Kwakiutl) artist,
British Columbia, Canada, ca. 1870. Wood, pigment, metal,
and cedar bark. Purchase: William Rockhill Nelson Trust,
31-125/7. 11 1/4 x 11 x 42 inches.

The Nelson-Atkins Museum of Art 

ORIGINS

CURATE YOUR OWN EXHIBITION



S

Utagawa Hiroshige (Japanese, 1797-1858). *Ferry Boats on the Fujikawa River, Suruga Province* from the series *Famous Places in Japan*, about 1832. Color woodblock print. Purchase: William Rockhill Nelson Trust, 32-143/232. 9 1/4 x 14 5/8 inches.

The Nelson-Atkins Museum of Art 

ORIGINS

CURATE YOUR OWN EXHIBITION



Dog, China, Eastern Han Dynasty (25-220 C.E.). Earthenware with glaze. Purchase: William Rockhill Nelson Trust, 32-41. 12 1/2 x 15 1/2 inches.

The Nelson-Atkins Museum of Art 

ORIGINS

CURATE YOUR OWN EXHIBITION



Portrait of a Man, Egypt, 1836-1759 B.C.E. Black granite or basalt. Purchase: William Rockhill Nelson Trust, 39-8.
12 x 13 1/2 x 11 inches.

ORIGINS

CURATE YOUR OWN EXHIBITION



Circle of Aertgen Claessoon van Leyden (Dutch, 1498-1564). *The Resurrection with Saints and Donors*, 1525-1530. Oil on panel (oak). Purchase: William Rockhill Nelson Trust, 38-4 A-C.
4 ft 3 inches x 5 ft 11 inches x 2 3/8 inches.

ORIGINS

CURATE YOUR OWN EXHIBITION



(Installed in *Echoes: Islamic Art and Contemporary Artists*, Fall 2013, The Nelson-Atkins Museum of Art. Photographer/John Lambertson)



Mosaic Spandrels of an Arch, attributed to Isfahan, Iran, about 1600. Glazed ceramic tile and gold leaf.
Purchase: William Rockhill Nelson Trust, 33-663/1-10.
102 5/8 x 233 1/8 inches.

The Nelson-Atkins Museum of Art

ORIGINS

CURATE YOUR OWN EXHIBITION



Storehouse, China, Eastern Han Dynasty (25-220 C.E.) Earthenware with iridescent green glaze.
Purchase: William Rockhill Nelson Trust, 34-204.
16 x 8 1/4 x 16 1/4 inches.



The Nelson-Atkins Museum of Art

ORIGINS

CURATE YOUR OWN EXHIBITION



S

Lintel Fragment with Indra on his Three-Headed Elephant. Cambodia or possibly Thailand, Second half of 900s C.E. Buff sandstone. Purchase: William Rockhill Nelson Trust, 49-20. 22 1/2 x 16 1/4 inches.

The Nelson-Atkins Museum of Art 

ORIGINS

CURATE YOUR OWN EXHIBITION



M

William James Glackens (American, 1870 - 1938). *Beach Side*, 1912-1913. Oil on canvas. Bequest of Frances M. Logan, 47-109. 34 1/2 x 40 3/4 x 3 1/2 inches.

The Nelson-Atkins Museum of Art 

**CURATE YOUR OWN
EXHIBITION**

DREAMS

The Nelson-Atkins Museum of Art 

**CURATE YOUR OWN
EXHIBITION**

ABSTRACT

The Nelson-Atkins Museum of Art 

**CURATE YOUR OWN
EXHIBITION**

LANDSCAPE

The Nelson-Atkins Museum of Art 

**CURATE YOUR OWN
EXHIBITION**

IMAGINATION

The Nelson-Atkins Museum of Art 

CURATE YOUR OWN
EXHIBITION

FRIENDSHIP

The Nelson-Atkins Museum of Art 

CURATE YOUR OWN
EXHIBITION

OBSERVATION

The Nelson-Atkins Museum of Art 

CURATE YOUR OWN
EXHIBITION

ENVIRONMENT

The Nelson-Atkins Museum of Art 

CURATE YOUR OWN
EXHIBITION

INTERIOR

The Nelson-Atkins Museum of Art 

**CURATE YOUR OWN
EXHIBITION**

LIFE

The Nelson-Atkins Museum of Art 

**CURATE YOUR OWN
EXHIBITION**

ANIMALS

The Nelson-Atkins Museum of Art 

**CURATE YOUR OWN
EXHIBITION**

FORM

The Nelson-Atkins Museum of Art 

**CURATE YOUR OWN
EXHIBITION**

LOSS

The Nelson-Atkins Museum of Art 

**CURATE YOUR OWN
EXHIBITION**

LINE

The Nelson-Atkins Museum of Art 

**CURATE YOUR OWN
EXHIBITION**

COMMUNITY

The Nelson-Atkins Museum of Art 

**CURATE YOUR OWN
EXHIBITION**

MOVEMENT

The Nelson-Atkins Museum of Art 

**CURATE YOUR OWN
EXHIBITION**

SYMBOLS

The Nelson-Atkins Museum of Art 

**CURATE YOUR OWN
EXHIBITION**

FAMILY

The Nelson-Atkins Museum of Art 

**CURATE YOUR OWN
EXHIBITION**

NARRATIVE

The Nelson-Atkins Museum of Art 

**CURATE YOUR OWN
EXHIBITION**

STILL LIFE

The Nelson-Atkins Museum of Art 

**CURATE YOUR OWN
EXHIBITION**

SPACE

The Nelson-Atkins Museum of Art 

CURATE YOUR OWN
EXHIBITION

PATTERN

The Nelson-Atkins Museum of Art 

CURATE YOUR OWN
EXHIBITION

PORTRAIT

The Nelson-Atkins Museum of Art 

CURATE YOUR OWN
EXHIBITION

DEATH

The Nelson-Atkins Museum of Art 

CURATE YOUR OWN
EXHIBITION

BEAUTY

The Nelson-Atkins Museum of Art 

**CURATE YOUR OWN
EXHIBITION**

YOU CHOOSE!

The Nelson-Atkins Museum of Art 

**CURATE YOUR OWN
EXHIBITION**

YOU CHOOSE!

The Nelson-Atkins Museum of Art 

**CURATE YOUR OWN
EXHIBITION**

YOU CHOOSE!

The Nelson-Atkins Museum of Art 

**CURATE YOUR OWN
EXHIBITION**

YOU CHOOSE!

The Nelson-Atkins Museum of Art 