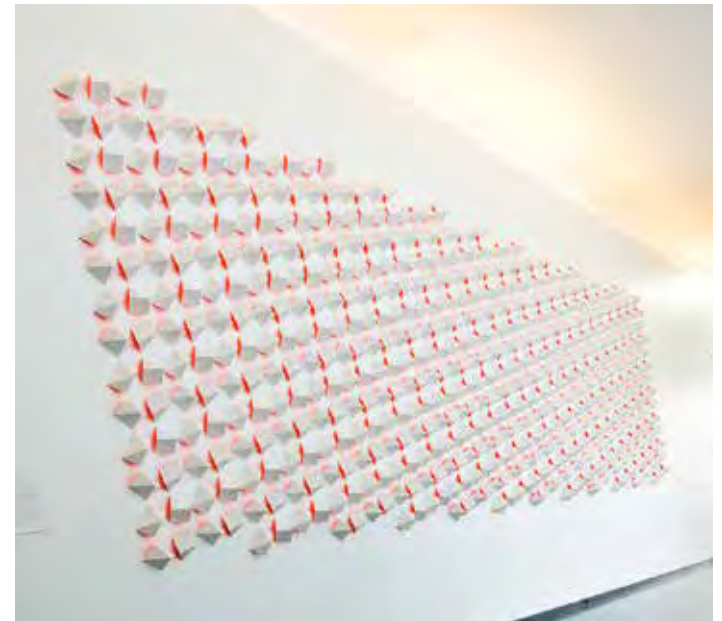




Top row: François Boucher, French (1703-1770). *Landscape with a Water Mill*, 1740. Oil on canvas, 51 5/16 x 64 1/4 inches. Purchase: William Rockhill Nelson Trust, 59-1. Paul Gauguin, French (1848-1903). *Autumn in Brittany (The Willow Tree)*, 1889. Oil on canvas, 36 1/4 x 28 7/8 inches. Gift of Henry W. and Marion H. Bloch, 2015,13,9.

Bottom row: Mary Cassatt, American (1844-1926). *At the Theater*, ca. 1879. Pastel on paper, 21 13/16 x 18 1/8 inches. Purchase: acquired through the generosity of an anonymous donor, F77-33. Josef Albers, American (born Germany), 1888-1976. *Homage to the Square: Red Brass*, 1961. Oil on canvas on pressed wood, 40 x 40 inches. Gift of the Friends of Art, F81-12. Art © The Josef and Anni Albers Foundation / Artists Rights Society (ARS), New York. Claude Monet, French (1840-1926). *Water Lilies*, ca. 1915-1926. Oil on canvas, 78 3/4 x 167 1/2 inches. Purchase: William Rockhill Nelson Trust, 57-26.

# COLOR



Top row: *Shiva Nataraja*, Indian, Tamil Nadu, 13th century, Chola period (ca. 890-1279). Bronze, 34 1/4 x 27 1/2 x 13 inches. Purchase: William Rockhill Nelson Trust, 34-7. Giorgio de Chirico, Italian (1888-1978). *Rose Tower*, 1913. Oil on canvas, 28 13/16 x 23 15/16 inches. Gift of the Friends of Art, 51-60. Art © Artists Rights Society (ARS), New York / SIAE, Rome. Luis Tomasello, Argentinian (1915-2014). *Chromoplastic Mural*, 2011. Bass wood and acrylic paint, 123 x 444 inches. Purchase: William Rockhill Nelson Trust through the George H. and Elizabeth O. Davis Fund, 2011.59.1-698. Art © Luis Tomasello.

Bottom row: Henry Moore, English (1898-1986). *Reclining Figure: Hand*, 1979. Bronze, 65 x 88 x 52 inches. Gift of the Hall Family Foundation, F99-33/12. Art © Artists Rights Society (ARS), New York / DACS, London. Wayne Thiebaud, American (born 1920). *Jawbreaker Machine*, 1963. Oil on canvas, 26 x 31 1/2 inches. Gift of Mr. and Mrs. Jack Glenn through the Friends of Art, F65-46. Art © Wayne Thiebaud / Licensed by VAGA at Artists Rights Society (ARS), New York. Cecil C. Carstenson, American (1906-1991). Norman Hollander, *Cellist*, 1956. Mahogany, 17 1/2 x 10 1/2 x 9 1/2 inches. Mid-America Annual Collection, Gift of the Mid-America Artists Association, 56-40.

# FORM





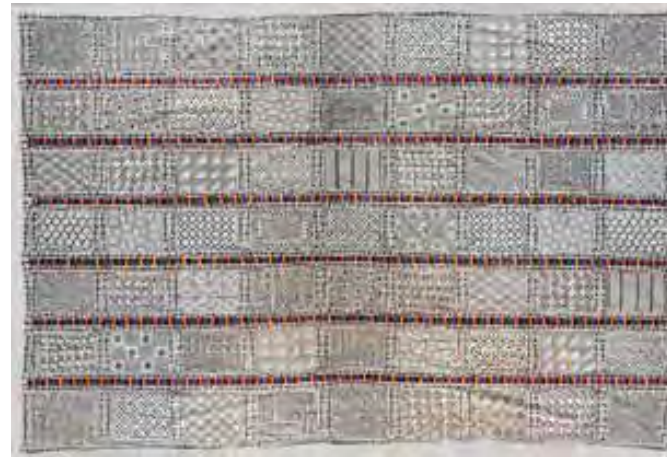
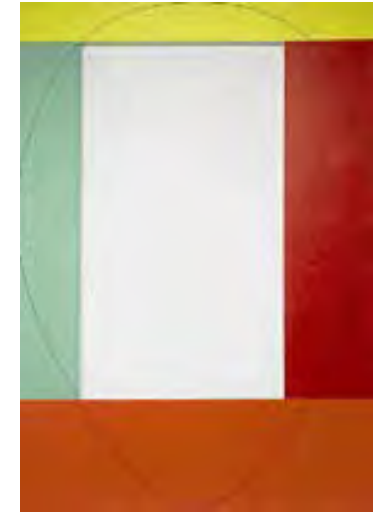
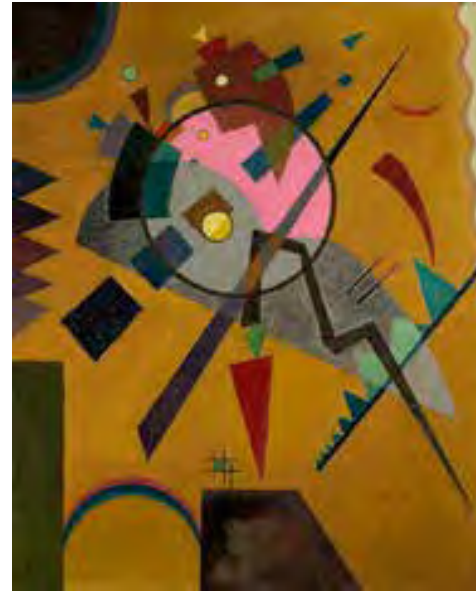
Top row: Franz Kline, American (1910-1962). *Turin*, 1960. Oil on canvas, 80 3/8 x 95 1/2 inches. Gift of Mrs. Alfred B. Clark through the Friends of Art, F61-23. Art © The Franz Kline Estate/ Artists Rights Society (ARS), New York. Willem de Kooning, American (born The Netherlands), 1904-1997. *Woman IV*, 1952-1953. Oil, enamel, and charcoal on canvas, 59 x 46 1/4 inches. Gift of William Inge, 56-128. Art © The Willem de Kooning Foundation / Artists Rights Society (ARS), New York. Albrecht Dürer, German (1471-1528). *The Rhinoceros*, 1515. Woodcut, 8 1/2 x 11 3/4 inches. Purchase: William Rockhill Nelson Trust, 32-74/19.

Bottom row: Bridget Riley, English (born 1931). *Arrest 2*, 1965. Acrylic on linen, 76 3/4 x 75 inches. Purchase: acquired through the generosity of the William T. Kemper Foundation—Commerce Bank, Trustee, 2001.1. Art © Bridget Riley. All rights reserved, courtesy Karsten Schubert, London. Käthe Kollwitz, German, (1867-1945). *Self-Portrait*, 1921. Etching, 8 1/2 x 10 1/2 inches. Gift of Mr. and Mrs. Thomas K. Baker, 71-21/2. Vincent van Gogh, Dutch (1853-1890). *Olive Trees*, June/September 1889. Oil on canvas, 28 3/4 x 36 1/4 inches. Purchase: William Rockhill Nelson Trust, 32-2.

LINE



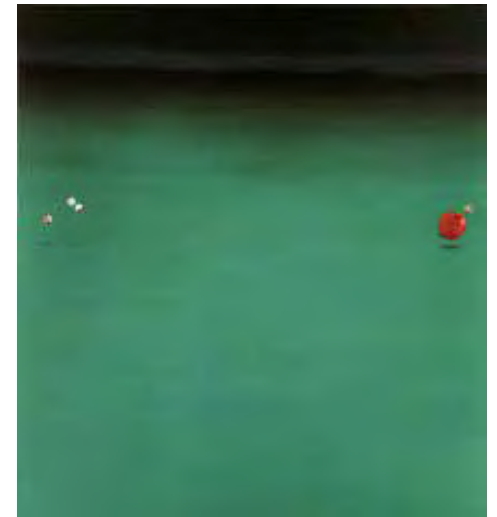




Top row: Stephen Greene, American (1918-1999). *The Flagellation*, 1951. Oil on preprimed canvas, 90 x 40 inches. Gift of the Westport Fund, 51-40. Art © Stephen Greene. Elizabeth Murray, American (1940-2007). *Art Part*, 1981. Oil on 22 canvases, 9 feet 7 inches x 10 feet 4 inches. Purchase: acquired through the generosity of the William T. Kemper Foundation—Commerce Bank, Trustee, 2000.19.A-V. Art © Estate of Elizabeth Murray / Licensed by Artists Rights Society (ARS), New York. Vasily Kandinsky, Russian (1866-1944). *Rose with Gray*, 1924. Oil on cardboard, 23 9/16 x 19 1/8 inches. Gift of the Friends of Art, F62-9. Art © Artists Rights Society (ARS), New York / ADAGP, Paris. Robert Mangold, American (born 1937). *Four Color Frame Painting #4*, 1984. Acrylic and black pencil on canvas, 120 x 84 inches. Purchase: acquired through the generosity of the William T. Kemper Foundation—Commerce Bank, Trustee, 2001.14.A-D. Art © Robert Mangold / Artists Rights Society (ARS), New York.

Bottom row: Harry Louis Freund, American (1905-1999). *Finis*, ca. 1946. Lithograph on paper, 12 7/8 x 20 inches. Gift of the artist, F99-5/8. *Antelope Helmet Mask*, Bobo peoples, Burkina Faso, 20th century. Wood and pigment, 22 x 8 x 28 inches. Gift of the Jedel Family Foundation, 2000.27.3. *Adinkra Cloth*, Akan, Asante peoples, Ghana, 1900-1925. Industrial cotton fabric and vegetable dye, approx.: 90 x 132 inches. Purchase: the Shirley and Barnett Helzberg Fund in support of the African Art department, 2013.2.6. Lyonel Feininger, American (1871-1956). *Gaberdorf II*, 1924. Oil on canvas mounted on board, 39 7/16 x 30 3/4 inches. Gift of the Friends of Art, 46-10. Art © Artists Rights Society (ARS), New York / VG Bild-Kunst, Bonn.

# SHAPE



Top row: David Hockney, English (born 1937). *Invented Man Revealing Still Life*, 1975. Oil on canvas, 36 1/4 x 28 3/4 inches (92.1 x 73 cm). Gift of Mr. and Mrs. William L. Evans Jr., 78-35. Art © David Hockney. Ellsworth Kelly, American (1923-2015). *White Black*, 1960. Oil on canvas, 86 1/8 x 49 1/8 inches. Purchase: William Rockhill Nelson Trust through the bequest of Dorothy K. Rice, 92-3. Art © Ellsworth Kelly. Keith Jacobshagen, American (born 1941). *Crow Call (Near the River)*, 1990-1991. Oil on canvas, 46 3/16 x 80 1/8 inches. Purchase: acquired through the generosity of the National Endowment for the Arts and the Nelson Gallery Foundation, F91-12. Art © Keith Jacobshagen.

Bottom row: Olafur Eliasson, Danish-Icelandic (born 1967). *The presence of absence (Nuup Kangerlua, 24 September 2015 #3)*, 2016. Concrete, 39 1/2 x 39 3/8 x 38 7/8 inches. Purchase: acquired through the generosity of the William T. Kemper Foundation—Commerce Bank, Trustee, 2017.25. Art © Olafur Eliasson. Robert Morris, American (1931-2018). *Glass Labyrinth*, 2013. Glass, steel, bronze and stone, 50 x 50 x 50 feet. Purchase: acquired through the generosity of the Hall Family Foundation, 2014.13. Art © Robert Morris/Artists Rights Society (ARS), New York. Clytie Alexander, American (born 1940). *Diaphan 15, Orange Yellow/Orange*, 2006. Acrylic on aluminum, 34 x 25 inches. Gift of the American Academy of Arts and Letters, New York; Hassam, Speicher, Betts and Symons Funds, 2007, 2007.36. Art © Clytie Alexander / Artists Rights Society (ARS), New York. Edward Ruscha, American (born 1937). *Bouncing Marbles, Bouncing Apple, Bouncing Olive*, 1969. Oil on canvas, 60 x 55 inches. Gift of Norman and Elaine Polsky, Fixtures Furniture, Kansas City, F86-50/3. Art © Edward Ruscha.

# SPACE

  
**The  
 Nelson-Atkins  
 Museum  
 of Art**





Top row: Jean-François Millet, French (1814-1875). *Waiting*, ca. 1853-1861. Oil on canvas, 33 x 47 15/16 inches. Purchase: William Rockhill Nelson Trust, 30-18. Ross Eugene Braught, American (1898-1983). *Tchaikovsky's Sixth*, 1935. Oil on canvas, 35 7/8 x 40 1/8 inches. Gift of Mrs. Massey Holmes, 38-15. Nicolas de Largillière, French (1656-1746). *Augustus the Strong, Elector of Saxony and King of Poland*, ca. 1714-1715. Oil on canvas, 57 1/2 x 45 1/2 inches. Purchase: William Rockhill Nelson Trust, 54-35. Elisabeth-Louise Vigée Le Brun, French (1755-1842). *Portrait of Marie-Gabrielle de Gramont, Comtesse de Caderousse*, 1784. Oil on wood panel, 41 3/8 x 29 7/8 inches. Purchase: William Rockhill Nelson Trust, 86-20.

Bottom row: Sven Birger Sandzén, American (born Sweden), 1871-1954. *The Great Peak (Longs Peak)*, 1938. Oil on canvas, 40 1/8 x 48 1/8 inches. Gift of Mrs. Massey Holmes in memory of her husband, 38-10. Alberto Giacometti, Swiss (1901-1966). *The Chariot*, 1950. Bronze with paint, 56 1/4 x 24 1/4 x 27 inches. Gift of the Hall Family Foundation, acquired from the Patsy and Raymond Nasher Collection, F99-33/7. © Artists Rights Society (ARS), New York / ADAGP, Paris. Diadem (n'kaka), Tabwa peoples, Democratic Republic of the Congo, 20th century. Cloth, animal skin, glass beads and feathers, 16 x 16 inches. Gift of Shirley and Barnett C. Helzberg Jr., 2013.42.53. Betsabé Romero, Mexican (born 1963). *Sugar Skin (Piel de Azúcar)*, 2007. Four carved tires with Taino iconography printed on 3 tons of sand. Purchase: the Jacques and Natasha Gelman Trust, 2013.12.2-A-D. Art © Betsabé Romero.

# TEXTURE



Top row: Michele Marieschi, Italian (1710-1743). *Capriccio with a Portico and a City Beyond*, 1730-1735. Oil on canvas, 10 13/16 x 17 13/16 inches. Purchase: William Rockhill Nelson Trust, 31-51 A. Jackson Lee Nesbitt, American (1913-2008). *Calhoun Street*, 1990. Lithograph on beige, machine-made wove paper, 13 5/8 x 11 9/16 inches. Gift of American Century Services, LLC, 2019.57.10. John Douglas Patrick, American (1863-1937). *Black Man, Frontal*. Charcoal on paper, 24 5/8 x 18 5/16 inches. Gift of the families of Grayce Patrick Wray and Hazel Patrick Rickenbacher, daughters of the artist, from the collection of Cherie Wray Smith and Pattie Rickenbacher Hogan in honor of the 75th anniversary of The Nelson-Atkins Museum of Art, 2009.47.3.

Bottom row: Jan van den Hoecke, Flemish (1611-1651). *The Adoration of the Shepherds*, 1632. Oil on wood panel, 20 x 15 1/16 inches. Purchase: William Rockhill Nelson Trust, 51-30. Juan Gris, Spanish (1887-1927). *Coffee Grinder and Glass*, 1915. Oil on paperboard, 15 1/8 x 11 1/2 inches. Gift of Earle Grant in memory of Gerald T. Parker, 71-22. Doel Reed, American (1894-1985). *Evening Mood*, 1956. Oil on canvas, 25 1/8 x 40 inches. Mid-America Annual Collection, Gift of the Mid-America Artists Association, 56-20.

# VALUE